

Milford Transit Meeting Minutes – September 25, 2018

Attendance:

Anthony Piselli – Chairman

Michael Lebov – Secretary Treasurer

Henry Jadach – Staff

The meeting was called to order by Chairman Piselli at 6:35 PM

1. Public Participation – None
2. Discussion of DOT Budget –

A budget was presented to the Board for the FY 19 fiscal year. Mr. Jadach related that his request for additional funding was apparently rejected as the DOT “Transit Operating Document” that was presented to the District reflected a 2.5% overall increase which was the same as the rest of the operators in the State and not what he had discussed with DOT staff. Mr. Piselli asked how the District would fare this year. Mr. Jadach stated that with some further reductions we should be on budget but that the cuts that were enacted in the past year would have to remain in place. These cuts reduced the number of vans in operation and altered a fixed route into a flexible fixed route to reduce hours.

The budget was accepted for the current fiscal as presented. Motion passed unanimously.

3. Capital Grant Submission

A review of the Capital Grant submission made to the FTA described the approved grant. Funds to replace the two shelters downtown, funds for building repairs and improvements and funds for preventative maintenance were included in the submission. The total grant which is 80% federal funds and 20% State funds is \$692,000.

4. Approval of Resolution to Accept Community Development Block Grant Funds

A resolution was made (attached) by the board and passed unanimously to have the Executive Director execute the grant document from the CDBG. Passed unanimously.

5. Operating Services

A brief discussion was held regarding ridership statistics. Mr. Lebov remarked on the decrease in ridership, Mr. Jadach explained that because of the service cuts the ridership has

correspondingly gone down. He hopes that with additional State support that this trend will be reversed.

6. Approval of the District's 3 Year DBE Goal

Mr. Jadach presented the District's 3 Year Disadvantaged Business Enterprise Goal package to the Board for approval. (Attached) After a brief discussion the Board passed a motion to approve the goal of 3.5% with the addition that it would like to see the District try to go beyond the stated goal. Passed unanimously.

There being no further business the meeting was adjourned at 7:50 PM.

Respectfully Submitted

Henry Jadach - Staff

**MILFORD TRANSIT DISTRICT
PROPOSED
DISADVANTAGED BUSINESS ENTERPRISE (DBE)
GOAL
FISCAL YEARS 2019, 2020, 2021**

AUGUST 1, 2018

The purpose in establishing a Disadvantaged Business Enterprise Program (DBE) and a goal is to ensure nondiscrimination in the award and administration of Department of Transportation (U.S. DOT) assisted contracts. In the case of the Milford Transit District (MTD) it is more specifically with the Federal Transit Administration's (FTA) transit programs. It is prepared to create a level playing field on which DBE's can compete fairly for U.S. DOT assisted contracts. This goal of participation is done for a three-year period. This period covers the Federal fiscal years of 2019, 2020 and 2021.

Disadvantaged Business Enterprises (DBEs) are small businesses where socially and economically disadvantaged individuals own at least a 51% interest and also control management and daily business operations. Owners can be minorities, women, or people with disabilities. Goals are set every three years to procure services and goods with the participation of DBEs.

BACKGROUND OF THE MILFORD TRANSIT DISTRICT

The Milford Transit District was created by the Milford Board of Aldermen in October of 1977 under Chapter 103a of the Connecticut State Statutes. The District employs 31 full and part-time staff. All Services are operated out of a 25,000 sq.ft. Administrative, Maintenance and Storage Facility at 259 Research Drive in Milford, CT.

Services

The District operates a local fixed route service serving Milford, a long-haul reverse commute service from Milford to Norwalk and an Americans With Disabilities van service. It also manages the rail parking at the Milford Rail Station for Metro North commuters.

OBJECTIVES OF THE MILFORD TRANSIT DISTRICT DBE PROGRAM AND GOAL

1. Prevent discrimination in U.S. DOT-assisted contracts
 2. Create a level playing field for DBE's
 3. Remove barriers to DBE participation
 4. Promote the use of DBE's and
 5. Develop firms to successfully compete for DBE Contracts
-

GOAL SETTING PROCESS

STEP 1 – The development of a base figure for the relatively availability of DBE firms to perform the projects anticipated by MTD.

STEP 2 – Consider adjustment to the based figure based on past experience and public consultation on the development of the goal.

The goal developed here will be for the three-year period of 2019 to 2021.

ANTICIPATED PROJECTS BY MTD 2019-2021

Construction of two (2) colonial bus shelters in downtown Milford.

These shelters are will include heat, lighting, solar power and other amenities. \$105,600

Facility State of Good Repair activities.

This project will include roofing, HVAC improvements, landscaping, carpentry and paving. \$300,000

Preventative Maintenance items and services purchased to maintain the District's fleet of vehicles \$720,000

LOCAL AREA MARKET

As part of the goal calculation the District chose a geographical area were contractors will be selected from.

MTD does not use geographic preferences but most contractors and suppliers that MTD uses come from our region and throughout Connecticut.

The majority of recently completed projects and purchases has come from Connecticut firms.

For the purposes of goal calculation MTD has decided to use all of Connecticut as the Local Area Market.

Step 1 – Base Figure – Relative Availability of DBE's

Ready Willing and Able DBE's

All Ready Willing and Able Firms

Projects were broken down into their respective components for the values of each. After the results were known of the project breakdown all Ready, Willing and Able firms were reviewed. All information regarding the total number of companies in Connecticut Ready, Willing and Able to perform the work specified was derived from the U.S. Census.

With the number of RWA firms calculated the CTDOT Program Directory of DBE's in Connecticut was consulted by NAICS listing to identify certified DBE's with relevant experience.

Using the NAICS codes ensured that an "apples to apples" comparison was being utilized.

The Base Figure was then calculated by dividing the number of RWA DBE Firms with the number of all RWA firms.

Milford Transit District Base Figure DBE Goal for 2019 – 2021 is **3.5%**

Step 2 – Adjusting the Base Figure

After calculating the base figure of the relative availability of DBE's evidence was examined to determine what adjustment was needed to the base figure in order to arrive at the overall goal.

The District has decided not to proceed to Step 2 in arriving at a final goal. Milford Transit has had a limited historical experience regarding DBE goals and goal attainment. This history includes a year that was skewed by the fact that a DBE was chosen as a prime contractor on one project accounting for a 52.4% share of all applicable federal funds that year.

The next three years do not have any major construction projects anticipated or planned. If feedback from the Districts outreach to the public dictates the base figure may be adjusted as a result.

Weighted DBE Availability for each Project				
Project	Amount of DOT Funds	% Total DOT Funds Weight		
1 Facility State of Good Repair	\$300,000	0.2667		
2 Bus Shelters	\$105,000	0.0933		
3 Preventative Maintenance	\$720,000	0.6400		
Total FTA Assisted Preproject Funds		1,125,000		
Project	# of DBE's Available to do this work	# of all Firms Available	Relative Availability	
1 Facility State of Good Repair	274	7615	0.0359	
2 Bus Shelters	143	1287	0.1111	
3 Preventative Maintenance	16	656	0.0243	
	433	9558	0.1713	
Project	Weight	x	Availability	Weighted Base Figure
1 Facility State of Good Repair	0.2667	x	0.0359	0.009
2 Bus Shelters	0.0933	x	0.1111	0.0103
3 Preventative Maintenance	0.6400	x	0.0243	0.0155
				0.0348
			Total	0.0348
			Expressed as a % (*100)	3.48%
			Rounded	
			Weighted Base Figure	3.5%

MILFORD TRANSIT DISTRICT - DBE GOAL SETTING 2019-2021				
AVAILABILITY OF EACH IDENTIFIED NAICS CODE				
State of Connecticut DOT DBE Directory July 2018				
	Contracting Oportunities State of CT	# of Businesse	DBE Certified	Amount DOT Funds
NAICS Codes	Contractor Type			
236118	Residential Remodelers	1136	6	15,000
237310	Paving Contractors	107	52	135,000
238110	Poured Concrete Foundation and Struct.	200	19	25,000
238130	Framing Contractors	91	1	2,000
238140	Masonry Contractors	247	20	5,000
238160	Roofing Contractors	163	3	25,000
238210	Electrical Contractors and other wiring	1,134	26	12,000
238220	Plumbing, Heating and Air conditioning	1,263	8	35,000
238320	Painting and Wall Covering Contractors	457	21	11,000
238330	Flooring Contractors	167	6	9,000
238350	Finish Carpentry Contractors	327	14	6,000
238390	Material and Supp, Shop Tools and Equip	80	7	50,000
238910	Site Prepration Contractors	511	30	90,000
423860	Material and Supp, Shop Tools and Equip	44	6	25,000
424720	Petroleum and Petroleum Products Merchant	26	3	60,000
441310	Automotive parts and accessories	291	0	562,500
441320	Tire Dealers	166	0	15,000
541330	Engineering Services	529	93	20,000
561730	Landscaping	2041	25	15,000
811113	Automotive Transmission Repair	49	0	7,500
		9029	340	1,125,000

Project 1					
Step 1 – Determine the weight of each type of work by NAICS Code:					
NAICS Code	Project	Amount of DOT Funds	% of Total DOT Funds (Weight)		
	Facility State of Good Repair				
236118	Residential Remodelers	\$15,000	0.0500		
237310	Paving	135,000	0.4500		
238110	Concrete	25,000	0.0833		
238130	Framing	2,000	0.0067		
238160	Roofing	25,000	0.0833		
238210	Electrical	12,000	0.0400		
238220	Plumbing-HVAC	35,000	0.1167		
238320	Painting	11,000	0.0367		
238330	Flooring	9,000	0.0300		
238350	Carpentry	6,000	0.0200		
561730	Landscaping	15,000	0.0500		
541330	Engineering	10,000	0.0333		
	Total FTA Assisted Contract Funds	\$300,000	1.0000		
Step 2 – Determine the Relative Availability of DBE's by NAICS Code:					
NAICS Code	Project	# of DBE's Available	# of All Firms Available	Relative Availability	
	Facility State of Good Repair				
236118	Residential Remodelers	6	1,136	0.0052	
237210	Paving	52	107	0.4859	
238110	Concrete	19	200	0.0900	
238130	Framing	1	91	0.0109	
238160	Roofing	3	163	0.0184	
238210	Electrical	26	1,134	0.0220	
238220	Plumbing-HVAC	8	1,263	0.0063	
238320	Painting	21	457	0.0459	
238330	Flooring	6	167	0.0359	
238350	Carpentry	14	327	0.0428	
561730	Landscaping	25	2,041	0.0137	
541330	Engineering	93	529	0.1758	
	Combined Totals	274	7,615	0.9528	
Step – 3 (Weight) x (Availability) = Weighted Base Figure					
NAICS Code	Project	Weight	x	Availability	Weighted Base Figure
	Facility State of Good Repair				
236118	Residential Remodelers	0.0500	x	0.0052	0.00026
237210	Paving	0.4500	x	0.4859	0.21862
238110	Concrete	0.0833	x	0.0900	0.00749
238130	Framing	0.0067	x	0.0109	0.00007
238160	Roofing	0.0833	x	0.0184	0.00153
238210	Electrical	0.0400	x	0.0008	0.00003
238220	Plumbing-HVAC	0.1167	x	0.0063	0.00073
238320	Painting	0.0367	x	0.0459	0.00168
238330	Flooring	0.0300	x	0.0359	0.00107
238350	Carpentry	0.0200	x	0.0428	0.00085
561730	Landscaping	0.0500	x	0.0137	0.00068
541330	Engineering	0.0333		0.1758	0.00585
				Total	0.23886
				Expressed as a % (*100)	23.88%
				Weighted Base Figure	23.9%

Project 2					
Step 1 Determine the weight of each type of work by NAICS Code:					
NAICS Code	Project	Amount of	% of Total DOT		
	Construction of Two Bus Shelters	DOT Funds	Funds (Weight)		
238140	Masonry	\$12,000	0.1143		
238910	Site Contractors	83,000	0.7904		
541330	Engineering	10,000	0.0953		
	Total FTA Assisted Contract Funds	\$105,000	1.0000		
Step 2-- Determine the Relative Availability of DBE's by NAICS Code:					
NAICS Code	Project	# of DBE's	# of All Firms	Relative	
	Construction of Two Bus Shelters	Available	Available	Availability	
238140	Masonry	20	247	0.0809	
238910	Site Contractors	30	511	0.0587	
541330	Engineering	93	529	0.1758	
	Combined Totals	143	1287	0.3154	
Step 3-- (Weight) x (Availability) = Weighted Base Figure					
NAICS Code	Project	Weight	x	Availability	Weighted
	Construction of Two Bus Shelters				Base Figure
238140	Masonry	0.1143	x	0.0809	0.0092
238910	Site Contractors	0.7904	x	0.0587	0.0463
541330	Engineering	0.0953	x	0.1758	0.0167
					0.0722%
				Expressed as a	
				% (*100)	
				Rounded	
				Weighted	
				Based Figure	7.2%

Project 3					
Step 1 -- Determine the weight of each type of work by NAICS Code:					
NAICS Code	Project	Amount of	% of Total DOT		
	Preventative Maintenance	DOT Funds	Funds (Weight)		
238390	Material and Supplies Shop Tools and Equip.	\$50,000	0.0694		
423860	Material and Supplies Shop Tools and Equip.	25,000	0.0347		
424720	Petroleum and Petroleum Products Merchants	60,000	0.0833		
441310	Automotive Parts and Accessories	562,500	0.7822		
441320	Tire Dealers	15,000	0.0200		
811113	Automotive Transmission Repair	7,500	0.0104		
	Total FTA Assisted Contract Funds	\$720,000	1.0000		
Step 2 -- Determine the Relative Availability of DBE's by NAICS Code:					
NAICS Code	Project	# of DBE's	# of all Firms	Relative	
	Preventative Maintenance	Available	Available	Availability	
238390	Material and Supplies Shop Tools and Equip.	7	80	0.0875	
423860	Material and Supplies Shop Tools and Equip.	6	44	0.1363	
424720	Petroleum and Petroleum Products Merchants	3	26	0.1153	
441310	Automotive Parts and Accessories	0	291		
441320	Tire Dealers	0	166		
811113	Automotive Transmission Repair	0	49		
	Combined Totals	16	656	0.3391	
Step 3 -- (Weight) x (Availability) = Weighted Base Figure					
NAICS Code	Project	Weight	x	Availability	Weighted
	Preventative Maintenance				Base Figure
238390	Material and Supplies Shop Tools and Equip.	0.0694	x	0.0875	0.0060
423860	Material and Supplies Shop Tools and Equip.	0.0347	x	0.1363	0.0047
424720	Petroleum and Petroleum Products Merchants	0.0833	x	0.1153	0.0096
441310	Automotive Parts and Accessories	0.7822	x	0	0.0000
441320	Tire Dealers	0.0200	x	0	0.0000
811113	Automotive Transmission Repair	0.0104	x	0	0.0000
					0.0203
				Expressed as a	
				%(*100)	
				Weighted Base	
				Figure	2.0%

Breakout of Race Neutral & Race Conscious Participation

The Milford Transit District will meet its overall goal by using race-neutral means of facilitating DBE participation. MTD will use the following race-neutral means to increase DBE participation.

1. Invitation to bid or quote will be sent directly to DBE's.
2. Bid Packages will be divided, whenever possible, into a number of smaller contracts in order to facilitate DBE participation.
3. DBE's will be solicited for construction management projects, where possible.
4. The District will provide bid specifications and requests for proposals in a timely manner to the disadvantaged community.
5. The District will, where beneficial, establish prorated payment and delivery schedules in order to minimize small firms cash flow problems.
6. Bid forms will be reviewed and unnecessary complexities eliminated.
7. Pre-Bid conferences will be held to emphasize and clarify DBE requirements and point out the use and availability of the DBE directory for prime contractors.
8. The DBE Officer will directly assist DBE's in overcoming the common barriers which exclude DBE's from the procurement process. Businesses requiring management and/or technical assistance will be identified through direct contact and possibly through indirect means such as a survey. Areas of assistance include:
 - a. Information on DBE organization and contractual needs.
 - b. Instruction on preparation of complete bid packages including specifications.
 - c. Opportunity to review successful bids on previous similar procurements.
 - d. Sessions covering reasons for unsuccessful bids.

The District DBE Liaison Officer will also work closely with financial institutions, insurance and bonding companies and prime contractors in an effort to alleviate financial barriers to program participation. Bonding requirements set by the District will be arranged so as to provide the minimum impediment possible to DBE participation consistent with good business practice. The Transit District estimates that it will meet its goal of 3.5% using race neutral measures. Race conscious measures may be used if it is clear that the goal will not be met by using race neutral measures for 100% goal attainment.

The following is a summary of the basis of our estimated breakout of race-neutral and race-conscious DBE participation:

1. Race-neutral measures have been used in the past and will continue to be used for the procurement of general operating services and supplies.
2. Race-conscious participation will occur when contract specific goals are established (i.e. construction project)

The Transit District will adjust the estimated breakout of race-neutral and race-conscious participation as needed to reflect actual DBE participation and we will track and report race-neutral and race-conscious participation separately. For reporting purposes, race neutral DBE participation includes, but is not necessarily limited to, the following: DBE participation through a prime contract a DBE obtains through customary competitive procurement procedures; DBE participation through a sub-contract on a prime contract that does not carry a DBE goal; DBE participation on a prime contract exceeding a contract goal; and DBE participation through a subcontract from a prime contractor that did not consider a firm's DBE status when making the award.

Public Participation

Legal Notice of the District's intended goal was published (attached) on July 24th in:

1. Connecticut Post
2. La Voz Hispania

Distribution of La Voz covers the following areas:

New Haven
Bridgeport
Hartford
Stamford
Springfield, MA

The District sent letters (attached) to over 40 DBE's that represented possible contractors for work in the upcoming three years. Comments have yet to be received and if there are any they will be considered in adjusting the District's goal.

The District also directly participated in a forum held at Greater Bridgeport Transit Authority on July 19, 2018. The forum was organized by GBTA and the Minority Construction Council of Connecticut. MTD was able to present its proposed goal and distribute material and discuss the types of projects anticipated during the next three years and the amounts of federal funds expected to be expended during that time. Over 20 DBE businesses were represented. Any feedback we receive as a result of this forum will be considered in a possible adjustment of our goal.

Public Notice

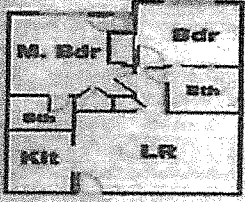
Disadvantaged Business Enterprise Goal

In accordance with the requirements of the U. S. Department of Transportation as set forth on 49 CFR Part 26, as amended, the Milford Transit District (MTD) hereby notifies the public that it is recommending the following Disadvantaged Business Enterprise (DBE) goal for the procurement contracts beginning October 15, 2018 and ending October 15, 2021. The overall total DBE Goal is 3.5%. Information pertaining to this goal and a description of how it was selected is available for inspection from 9:00 am to 5:00 pm (Eastern Time) at MTD's offices located at 259 Research Drive, Milford, CT 06460 for 30 calendar days following the date of publication of this notice. The comments may be sent to the attention of the DBE Liaison Officer at the same address and/or to the Regional Civil Rights Officer, Federal Transit Administration, Region 1, Kendall Square, 55 Broadway, Suite 920, Cambridge, MA 02142. If comments are received MTD may amend this document.

fully landscaped, very and safe. Some units ations, 24 hour service. ee, Ask for Bill or Sean 203-877-9065 Open Weekends.

APARTMENTS FOR RENT

Two Bedroom, Two Bath \$1350+



PLEASANTVIEW APARTMENTS

ART GALLERY: 500+ Originals

On Site Maint./Mgmt. 24/7

Free Gated covered parking

State of the art security system

On site spacious laundry



Area's best value

Compare with Similar Newer

2 Bedroom Apartments at

\$2100 to \$3300 per month



it: www.PleasantViewBridgeport.com



resident Agent Norman, 203-916-2796

This is to give notice that I, AHID JAMAL, 892 WOOD AVE BRIDGEPORT, CT 06604-2130

Have filed an application placarded 07/23/2018 with the Department of Consumer Protection for a GROCERY BEER PERMIT for the sale of alcoholic liquor on the premises at 900 WOOD AVE BRIDGEPORT CT 06604-2130

The business will be owned by: WOODS MART LLC

Objections must be filed by: 09-03-2018

AHID JAMAL

Copies of specifications and bid forms are available on the town website www.townofstratford.com or at the Purchasing Agent's Office, 2725 Main St., Stratford, CT. Inquiries should be directed to the Purchasing Dept. at 203-385-4044.

A pre-bid meeting will be held 8:00 am July 26 at the Public Works Dept. 550 Patterson Ave.

Michael Bonnar, Purchasing Agent

Public Notice
BPT Tax Auction 7-25-18 9:00 a.m. Mid-Town Auto 177 Pulaski St., Bpt. CT 06608, 2013 Sentra 3N1AB7AP4DL712025

PUBLIC NOTICES

PUBLIC NOTICE OF 14TH DAY BEFORE ELECTION ENROLLMENT SESSION

The last day any qualified Bridgeport resident can register to vote by mail and postmarked by this date for the upcoming August 14, 2018, Democratic and Republican Primary is August 9, 2018. (SEC 9-35). However, any voter who is new or unaffiliated must be received by 12:00 noon of August 13, 2018

There will be a Special Primary Enrollment session on July 31, 2018 between the hours of 5:00 - 7:00 p.m.

Sandi I. Ayala, Democratic Registrar of Voters
Linda A. Grace, Republican Registrar of Voters

Public Notice
Disadvantaged Business Enterprise Goal

In accordance with the requirements of the U.S. Department of Transportation as set forth in 49 CFR Part 26, as amended, the Milford Transit District (MTD) hereby notifies the public that it is recommending the following Disadvantaged Business Enterprise (DBE) goal for the procurement contracts beginning October 15, 2018 and ending October 15, 2021. The overall total DBE goal is 3.5%. Information pertaining to this goal and a description of how it was selected is available for inspection from 9:00 a.m. to 5:00 p.m. (Eastern Time) at MTD's offices located at 259 Research Drive, Milford, CT 06460 for 30 calendar days following the date of publication of this notice. The comments may be sent to the attention of the DBE Liaison Officer at the same address, and/or to the Regional Civil Rights Officer, Federal Transit Administration, Region 1, Kendall Square, 55 Broadway, Suite 920, Cambridge, MA 02142. If comments are received MYD may amend this document

LEGAL NOTICE
CONNECTICUT LOTTERY CORPORATION
NOTICE OF END OF INSTANT GAME

The Connecticut Lottery Corporation hereby gives notice that sales of the scratch games "2X The Money 8th Edition", (1408) "10,000 Cash", (1346) and "Holiday Surprise" (1366) ended on 7/23/2018.

All winning tickets, including top prizes, for these games must be validated no later than 1/19/2019.

The Official Procedures for All Scratch Games apply to this game. Those Official Procedures, as well as end of game and unclaimed prize information, are available at ctlottery.org and from CT Lottery Games Dept., 777 Brook St., Rocky Hill, CT 06067.

7/24/18

Farmington, CT

People's United Bank, Bridgeport, CT

it is contemplated that the main office named banks will continue to operate, number of branches will be closed or People's United Bank, National Association regarding bank branches until after co

This notice is published pursuant to 15. Anyone may find information about date of the comment period and the OCC weekly Bulletin available at www.occ.gov written comments on this application period to: Director for District Licensing Currency, 340 Madison Avenue, Fifth or NE.Licensing@occ.treas.gov.

The public file is available on request. public file on the application should be Licensing.

Farmington Bank
People's United Bank, National Association

DOCKET NO: FBT-CV-18-6070853-S

THE BANK OF AMERICA

VS

THE HEIRS, BENEFICIARIES AND/OR DEVISEES OF THE ESTATE OF GRZEGORZ MISZCZUK

STATE OF CONNECTICUT

NOTICE TO: THE HEIRS, BENEFICIARIES, REPRESENTATIVES AND KNOWN PERSONS, CLAIMING OR WH TITLE, INTEREST OR ESTATE IN OR UPON THE REAL PROPERTY DESCRIBED ADVERSE TO THE PLAINTIFF, WHETHER CLAIM BE VESTED OF

The Plaintiff Bank of America, N.A., has and/or Devisees of the Estate of Grzegorz and his widower, heirs, representative defendant in the complaint which it is bringing seeking a foreclosure of its mortgage upon Road, Trumbull, CT. This complaint is 13, 2018 and will be pending therein after 1

The subscribing authority finds that the Defendant, if living, and the identity and heirs, if not living, is unknown to the Plaintiff. Reasonable efforts have been made to failed.

Now, therefore, it is hereby ordered that action be given to each such defendant by a true and attested copy of this order be posted once a week for 2 consecutive weeks, 7/23/2018, and that return of service be made

WELCH, J
Assistant Clerk, Superior Court
Judicial District of Fairfield

A TRUE COPY ATTEST
MARK A. PESIRI,
CONNECTICUT STATE MARSHAL



City of Milford, Connecticut

Founded 1639

MILFORD TRANSIT DISTRICT

259 Research Drive
Milford, CT 06460
Tel. 203-874-4507

Henry D. Jadach
Executive Director

Board of Directors

Anthony Piselli, Sr.
Chairman
Michael Lebov
Sec. / Treas.

Greetings:

July 18, 2018

In accordance with the requirements of the U.S. Department of Transportation the Milford Transit District hereby notifies the public that it is recommending the following **Disadvantaged Business Enterprise Goal**, covering the next three years beginning on October 15, 2018, for applicable procurement projects of **3.5%**.

We are reaching out to your organization to determine if you have any comments or feedback regarding this goal and to help us disseminate this information to DBE's and to small businesses who may wish to be on our bidders list for the upcoming three years.

It is our intention to encourage DBE's and small businesses to participate in our procurements. Federal funds anticipated to be spent during this period would include projects that will keep our facility in a state of good repair, cause for the construction and installation of bus shelters and a preventative maintenance program which will purchase of materials and services to keep our fleet in a safe and reliable manner.

Thank you for your attention in this matter. If you have any questions, comments or feedback regarding our DBE program and its goal please feel free to contact me.

Sincerely,

Henry Jadach
Executive Director
DBE Liaison Officer

CERTIFIED RESOLUTION
OF THE
MILFORD TRANSIT DISTRICT

THIS IS TO CERTIFY that the Board of Directors of the Milford Transit District at a meeting held on Tuesday September 25, 2018 authorized Henry Jadach, the Executive Director, to execute a contract on behalf of the Milford Transit District with the City of Milford, Connecticut, for the purpose of receiving Community Development Block Grant (CBDG) program funds to provide transportation to low income individuals who are mentally and physically challenged and the elderly under Contract Number PY44-PS575 and to bind and obligate the Milford Transit District in connection herewith.

THIS WILL ALSO CERTIFY that such action of the said Board of Directors has not been modified, rescinded, amended or revoked in any way and remains in full force and effect as of the date hereof.

Dated this 25th day of September 2018



Secretary – Treasurer
Michael Lebov



Milford Transit District
"Ride the Wave"

SEAL

t Agency: Milford Transit District
Service Description: Urban Fixed Route, Including Coastal I, II and III, Saturday and Shuttle
Period: July 1, 2018 to June 30, 2019

State Project Number: 0424-T068
Agreement Number: 4-22-08(05)
Addendum Number:

Expense Object Class	Operations/Maintenance		General Administration		Total	Total	% Increase/ (Decrease)
	SFY 2018 Projected	SFY 2019 Proposed	SFY 2018 Projected	SFY 2019 Proposed	SFY 2018 Projected	SFY 2019 Proposed	
501 Labor	568,806	580,182	282,588	291,772	851,394	871,954	2.41%
502 Fringe Benefits	19,265	20,517	149,472	159,188	168,737	179,705	6.50%
503 Services	7,846	8,101	44,759	46,818	52,605	54,919	4.40%
504 Materials and Supplies Consumed	275,389	290,535	16,666	17,583	292,055	308,118	5.50%
505 Utilities			44,899	46,021	44,899	46,021	2.50%
506 Casualty and Liability Costs			18,965	19,439	18,965	19,439	2.50%
507 Taxes			7,300	7,300	7,300	7,300	0.00%
508 Purchased Transportation Services					-	-	
509 Miscellaneous Expenses			2,800	2,800	2,800	2,800	0.00%
510 Expense Transfer					-	-	
511 Interest Expense					-	-	
512 Leases and Rentals					-	-	
- Other (please specify)					-	-	
- Other (please specify)					-	-	
- Other (please specify)					-	-	
EXPENSES - TOTAL	871,306	899,336	567,449	590,921	1,438,755	1,490,257	3.58%

Revenue Category			
401 Passenger Fares for Transit Service		\$180,000	\$180,000
402 Special Transit Fares			
406 Auxiliary Transportation Revenues			
407 Nontransportation Revenues			
- Other (please specify)			
- Other (please specify)			
- Other (please specify)			
REVENUES - TOTAL		\$180,000	\$180,000
			0.00%

DEFICIT - TOTAL		\$1,258,755	\$1,310,257	4.09%
------------------------	--	--------------------	--------------------	--------------

Federal Subsidy				
State Subsidy		\$1,008,839	\$1,264,339	25.33%
Local Subsidy		\$249,916	\$45,918	-81.63%
SUBSIDIES - TOTAL		\$1,258,755	\$1,310,257	4.09%

SERVICE STATISTICS			
Linked Passengers			
Transfers		32,500	32,500
Unlinked Passengers		298,000	310,000
Miles		295,294	295,294
Hours		19,502	19,502
Days of Operation		365	365
			0.00%
			4.03%
			0.00%
			0.00%

Name of Transit Agency: Milford Transit District
Service Description: ADA Transit Service
Period: July 1, 2018 to June 30, 2019

State Project Number: 0424-T0??
Agreement Number: 4-22-08(05)
Budget Addendum Number:

Expense Object Class	Operations/Maintenance		General Administration		Total	Total	% Increase/ (Decrease)
	SFY 2018 Projected	SFY 2019 Proposed	SFY 2018 Projected	SFY 2019 Proposed	SFY 2018 Projected	SFY 2019 Proposed	
501 Labor	310,999	317,219	104,111	107,494	415,110	424,713	2.31%
502 Fringe Benefits	87,964	93,682	96,859	103,155	184,823	196,836	6.50%
503 Services			9,434	9,434	9,434	9,434	0.00%
504 Materials and Supplies Consumed	54,000	56,970	664	700	54,664	57,670	5.50%
505 Utilities			15,833	16,624	15,833	16,624	5.00%
506 Casualty and Liability Costs			3,790	3,980	3,790	3,980	5.00%
507 Taxes					-	-	
508 Purchased Transportation Services					-	-	
509 Miscellaneous Expenses			750	750	750	750	0.00%
510 Expense Transfer					-	-	
511 Interest Expense					-	-	
512 Leases and Rentals					-	-	
- Other (please specify)					-	-	
- Other (please specify)					-	-	
- Other (please specify)					-	-	
EXPENSES - TOTAL	452,963	467,871	231,440	242,137	684,403	710,008	3.74%

Revenue Category		Total	Total	% Increase/ (Decrease)
		SFY 2018 Projected	SFY 2019 Proposed	
401 Passenger Fares for Transit Service				
402 Special Transit Fares				
406 Auxiliary Transportation Revenues				
407 Nontransportation Revenues				
- Other (please specify)				
- Other (please specify)				
- Other (please specify)				
REVENUES - TOTAL		142,844	120,000	-15.99%

DEFICIT - TOTAL	541,559	590,008	100.00%
------------------------	---------	---------	---------

Federal Subsidy			
State Subsidy	288,988	375,437	29.91%
Local Subsidy	252,571	214,571	-15.05%
SUBSIDIES - TOTAL	541,559	590,008	8.95%

SERVICE STATISTICS		Total	Total	% Increase/ (Decrease)
		SFY 2018 Projected	SFY 2019 Proposed	
Linked Passengers				
Transfers				
Unlinked Passengers		48,624	48,624	0.00%
Miles		221,094	223,225	0.96%
Hours		16,271	16,325	0.33%
Days of Operation		358	358	0.00%

Name of Transit Agency: Milford Transit District
Service Description: Dial-a-Ride Transit Service
Period: July 1, 2018 to June 30, 2019

State Project Number: 0424-T0??
Agreement Number: 4-22-08(05)
Budget Addendum Number: 2008-OPU-01

nt Number: 4.22-08(05) m Number: 2008-OPU-01							
Expense Object Class	Operations/Maintenance		General Administration		Total	Total	%
	SFY 2018 Projected	SFY 2019 Proposed	SFY 2018 Projected	SFY 2019 Proposed	SFY 2018 Projected	SFY 2019 Proposed	Increase/
501 Labor	131,526	\$134,157	\$41,405	\$42,751	\$172,931	\$108,404	-37.31%
502 Fringe Benefits	59,898	\$63,791	44,510	\$47,403	\$104,408	\$61,995	-40.62%
503 Services			\$4,133	\$4,133	\$4,133	\$2,364	-42.80%
504 Materials and Supplies Consumed	26,525	\$27,984	\$1,550	\$1,635	\$28,075	\$18,550	-33.93%
505 Utilities			\$7,628	\$8,009	\$7,628	\$4,728	-38.02%
506 Casualty and Liability Costs			\$1,725	\$1,811	\$1,725	\$1,280	-25.80%
507 Taxes					\$0	\$0	
508 Purchased Transportation Services					\$0	\$0	
509 Miscellaneous Expenses			\$350	\$250	\$350	\$350	0.00%
510 Expense Transfer					\$0	\$0	
511 Interest Expense					\$0	\$0	
512 Leases and Rentals					\$0	\$0	
- Other (please specify)					\$0	\$0	
- Other (please specify)					\$0	\$0	
- Other (please specify)					\$0	\$0	
EXPENSES - TOTAL	\$217,949	\$225,932	\$101,301	\$105,993	\$319,250	\$197,671	-38.08%
Revenue Category							
401 Passenger Fares for Transit Service			\$781,153	\$822,009	\$61,219	\$31,500	-48.55%
402 Special Transit Fares						-	0.00%
406 Auxiliary Transportation Revenues							
407 Nontransportation Revenues							
- Other (please specify)							
- Other (please specify)							
- Other (please specify)							
REVENUES - TOTAL					\$61,219	\$31,500	-48.55%
DEFICIT - TOTAL							
				\$258,031	\$166,171	-35.60%	
Federal Subsidy							
					\$11,000	100.00%	
					\$36,982	\$92,000	148.77%
					\$221,049	\$63,171	-71.42%
SUBSIDIES - TOTAL				\$258,031	\$166,171	-35.60%	
SERVICE STATISTICS							
Linked Passengers							
Transfers							
Unlinked Passengers				18,922	12,200	-35.52%	
Miles				103,164	78,200	-24.20%	
Hours				7,112	5,425	-23.72%	
Days of Operation				358	358	0.00%	

53.29
33.5
1.2
8.9
2.4
0.65

0.06