



Milford Health Department & Department of Human Services



About Us

The Milford Health Department consists of four divisions, Community Health, School Health, Environmental Health and Emergency Preparedness. Together with the Department of Human Services, we provide a comprehensive framework of essential public health and social services to the community supporting overall health and wellbeing for all City of Milford residents.



OUR MISSION

To protect and promote optimal health for all Milford residents through our commitment to excellence and delivery of comprehensive public health services.



OUR VISION STATEMENT

Working Together For A Healthier Community

KEY STATISTICS



Fiscal Year
2022-2023

- **966** Food Service Inspections Conducted
- **\$568,603** Total Amount of Grant Funding Received
- **\$74,598** Financial Assistance provided to Milford Families
- **6 months to 97 years old**- Age range of clients serviced
- **1,942** Total Vaccines Administered
- **43,221** School Health Office Visits
- Responded to over **6,000** calls for service or assistance



<https://www.ci.milford.ct.us/health-department>



82 New Haven Ave, Milford, CT 06460



203- 783- 3285

Follow Us

@MilfordHealthDepartment





ENVIRONMENTAL HEALTH DIVISION

JULY 1, 2022 - JUNE 30, 2023



FOOD PROTECTION SERVICES

- 585** Licenses Issued
- 966** Inspections
- 37** Plan reviews for new or remodeled establishments
- 41** Food Illness Investigations
- 128** Violation Orders Issued



HEALTHY HOMES & SAFE HOUSING

- 75** Complaints of unsafe conditions investigated
- 14** Healthy Homes Assessments
- 4** Lead Poisoning Prevention Inspections
- 22** Troubled Housing/Hoarding Cases



PUBLIC BEACHES, POOLS & RECREATIONAL WATERS

- 256** Beach Water Samples Collected
- 37** Public Pool Inspections



ENVIRONMENTAL HEALTH HAZARDS

- 122** Investigations Conducted
- 10** Violation Orders Issued



LAND USE, SEPTIC SYSTEMS & PRIVATE WELLS

- 41** Septic System Inspections
- 8** Planning & Zoning Project Reviews
- 3** Well Drilling Permits



VECTOR CONTROL

Mosquitoes, Ticks, bed bugs, rabies, vermin & rodents

- 101** Mosquito Breeding Sites monitored & treated
- 27** Complaints Investigated
- 123** Tick Specimen Submissions



SCHOOLS & CHILDCARE CENTERS

- 7** Licensed Daycare Center Inspections
- 3** Private School Inspections
- 20** Public School Kitchen Inspections



ANTI-BLIGHT CODE ENFORCEMENT

- 88** Investigations Conducted
- 24** Warning letters Issued
- 19** Violation Orders Issued



10%

10% INCREASE IN LICENSED TEMPORARY FOOD SERVICE EVENTS



63%

63% INCREASE IN CALLS TO ASSIST THE FIRE & POLICE DEPARTMENTS



400%

400% INCREASE IN LEAD INSPECTIONS



School Health & Public Health Nursing Division

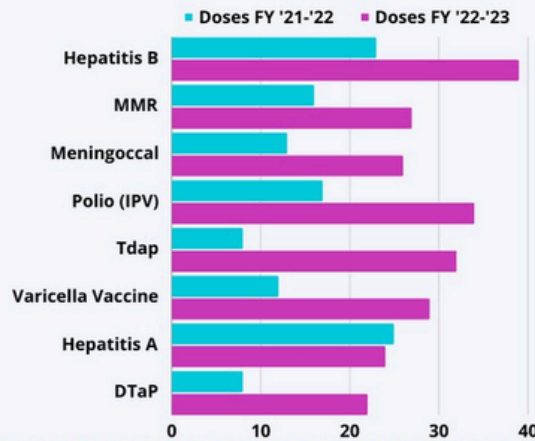
July 1, 2022 - June 30, 2023

Immunization Clinics



Hosted **40** Clinics serving clients ranging in age from **6 months → 97 years old**

Immunizations Provided



Vaccines Administered

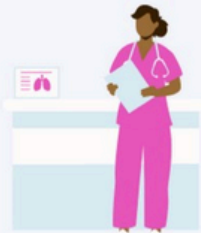


588
Influenza doses

1,104
COVID-19 doses

1,942 Total Vaccines Administered

School Nursing



Health conditions requiring management by the school nurse


- ADD/ADHD
- Asthma
- Cardiac Conditions
- Diabetes
- COVID-19
- Seizure disorders
- Food allergies
- Mental health
- Orthopedic issues
- Influenza/RSV




43,221
Health Office Visits

↑ 15%

Over 12,000 Mandated Health Screenings



- Vision
- Hearing
- Postural



16,324
Medications & Treatments Administered

(Daily medications, emergency medications, and tube feedings)

Safety in the Workplace



Annual Training

Provide annual blood borne pathogen training.



Vaccinations

Hepatitis A & B/ Tetanus vaccinations for new hires if needed.



Case Management

Post blood borne pathogen exposure case management for all city employees.



Exposure Guidance

COVID-19 isolation and exposure guidance for all City and Milford Public School employees.

Specialty Services

- On-Call Immunization Nurse for all Milford Students
- Prophylactic Rabies Vaccine for Milford Veterinary Employees
- Tuberculosis testing and follow-up for individuals needing referral for treatment



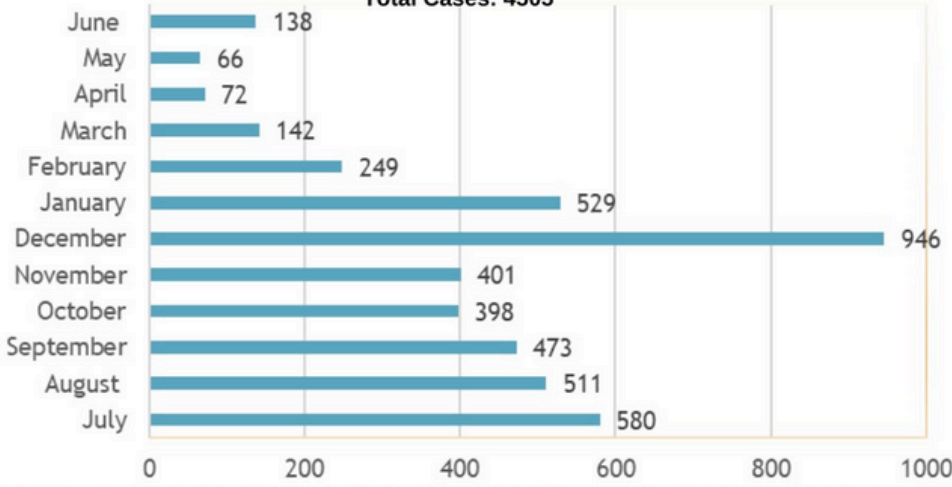
Community Health Division

July 1, 2022 - June 30, 2023

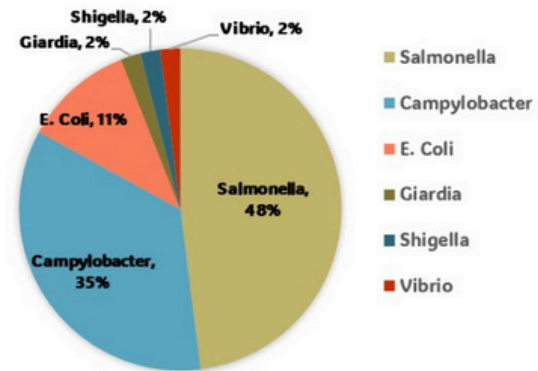


Communicable Disease Surveillance

Reportable Communicable Disease cases by Month
July 1, 2022- June 30, 2023
Total Cases: 4505



Foodborne Illness Cases
July 1, 2022-June 30, 2023
Total Cases: 46



Health Promotion and Education



Accreditation Efforts



Grant Management

IN TOTAL DOLLARS
\$568,603

- Putting on AIRS
- ELC 2
- Healthy Homes
- Per Capita
- Public Health Emergency Preparedness
- Overdose Data 2 Action

Nearly **15%** increase



Public Health Emergency Preparedness Division

July 1, 2022 - June 30, 2023

Key Highlights

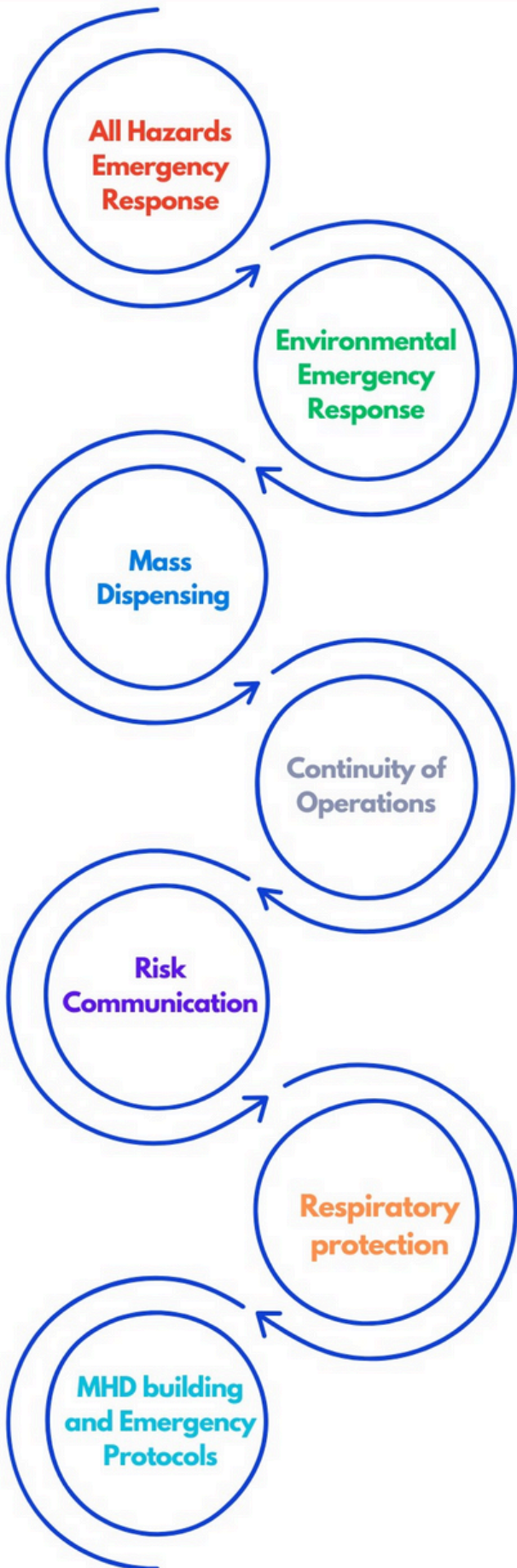
Emergency Planning, Response & Recovery:
Maintain **7** emergency operation plans

Emergency operations coordination with
local & regional partnerships:
30 New Haven County cities/towns

Medical Reserve Corps (MRC) &
Community Emergency Response Team (CERT)
Coordinated **285** Volunteer hours

Medical Reserve Corps
Attended **18** meetings and events

Public Health Emergency Preparedness:
46 meetings, events and exercises





MILFORD DEPARTMENT OF HUMAN SERVICES

July 1, 2022 - June 30, 2023



Outreach Client Services

1,350 Households ~ 2,622 Individuals



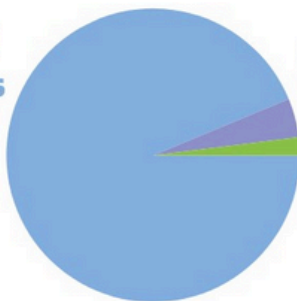
Service	Households	Individuals
Utility Counseling & Assistance / Emergency Oil	100 ↑ 92% FY22 TO FY23	224 ↑ 85% FY22 TO FY23
Rent/Mortgage Counseling & Assistance	52	131
Emergency Lodging	8	12
Food Vouchers* & Holiday Meal Programs	643 ↑ 52% FY22 TO FY23*	1623 ↑ 59% FY22 TO FY23*
Adopt A Family	63	204
Senior Farmers Market Vouchers	565	652

*Emergency Food Vouchers distributed to households and individuals increased by 52% & 59% respectively

Financial Assistance Provided

Total: \$74,598.42

Human Services
93.7%



United Way
4.3%
Salvation Army
2%

Federal & State Assistance Programs

Energy Assistance

130 applications taken by DHS - **95%** approved
Total amount provided: **\$70,890.00**

Renters Rebate

386 applications taken by DHS - **97%** approved
Total amount provided: **\$201,618.50**

Dollar Energy

22 applications taken by DHS - **100%** approved
Total amount provided: **\$3,850.00**

Other Services Provided

Budget Counseling
Clothing Assistance
Employment & Training Referrals
SNAP/DSS Assistance/Counseling

Access Health CT/ Medicaid/ Medicare
CT Diaper Bank
Camp Happiness Scholarships
Case Coordination with Community Partners



MILFORD YOUTH & FAMILY SERVICES

July 1, 2022 - June 30, 2023



Featured Programs

Building Resilience in Youth Workshop

- A discussion to better understand how resilience allows us to develop skills to cope with experiences that could feel overwhelming.

Community Walk and Talk Series

- A community collaboration - Drawing Connections: Prevention, Connection, and Community
- A walk to discuss stress and sexual assault awareness while building resiliency. Hosted by Diane Frankel-Gramelis, MS, & Rape Crisis Center

Mayor's Youth Award

- Honored Milford youth, age 18 or under, who have participated in activities to improve the quality of life in the city, or assist its citizens. 243 youth were honored in 2023.

Prevention Based Services



Community Collaborations & Partnerships

- Milford Public Schools
- Milford Police Department
- Milford Fire Department
- Boys and Girls Club of Milford
- MDT - Milford Rape Crisis Center Multidisciplinary Task Force
- The Department of Children and Families
- The United Way of Milford
- Milford Recreation Department
- Bridges Healthcare
- Milford Clergy Association
- Youth Services Network
- Beth-El Center
- Bridgeport Hospital Milford Campus
- Woodruff Family YMCA
- Milford Prevention Council
- Juvenile Firesetter Intervention Program
- Juvenile Diversion Program
- Mattioli Sports Scholarship - 9 youth
- Health Improvement Alliance Behavioral Health Task Force
- Milford COOR - Opioid taskforce

Back-to-School Backpack Program

223

Backpacks Distributed

↑ 30% Increase

Salvation Army Shoe Voucher Program

100

Shoe Vouchers

distributed

Basic Needs Assistance

163

Households

Assisted