

VICINITY MAP
SCALE: 1"=800'

MAP REFERENCES:

- "SURVEY & TOPOGRAPHIC OF LOT 32-50, & 91-108 WILLIAM ST., ROWE AVENUE, MUNSON ST. OF WESTFIELD PARK, MILFORD, CT." SCALE 1"=40'; APR. 14, 1995, SHEET 1 OF 5, BY C.C.G./H. C. TEDFORD ASSOCIATES, ENGINEERS & LAND SURVEYORS, MILFORD, CONN.
- "MAP OF WESTFIELD PARK," OWNED BY MUNSON & NETTLETON, MILFORD, CONN." DATED APR. 7, 1910, SCALE 1"=80'. MILFORD TOWN CLERK MAP A51.
- "MODIFIED SUBDIVISION LOT LINE ADJUSTMENT PLAN OF LOTS 69, 70, 71, 72, 73, 74, 75, WESTFIELD PARK, WILLIAM STREET, MILFORD, CONN." DATED DEC. 1, 1998, SCALE 1"=20'. BY C.C.G./H. C. TEDFORD ASSOC. MILFORD TOWN CLERK MAP AB-2467.
- "SUBDIVISION PLAN, PREPARED FOR C. HODDINOTT, WILLIAM ST., MILFORD, CONN." DATED JUNE 12, 1992, SCALE 1"=40' BY THE CENTER FOR ENGINEERING, INC., WALLINGFORD, CT. MILFORD TOWN CLERK MAP AB-1949.
- "BOUNDARY SURVEY FOR NEHWART PRODUCTS, INC., 80 COLLINGSDALE DRIVE, MILFORD, CT." DATED OCT. 29, 1987, REVISED JAN. 26, 1989, SCALE 1"=30' BY CODESPOTI & ASSOCIATES. MILFORD TOWN CLERK MAP AB-1674.
- "GARDEN VIEW ACRES, MILFORD, CONN., OWNED & DEVELOPED BY TEMPKIN & MELICI, TORRINGTON, CONN." DATED NOV. 1961, SCALE 1"=40' BY EMMONS, SPRINGSTEEN, & DUNBAR INC., MILFORD, CONN. MILFORD TOWN CLERK MAP AB-95.
- "MEDER AND SLAVIN PROPERTIES, DATED NOV. 1977, SCALE 1"=40', ASSESSORS MAP 32, BLOCK 336, LOTS 1, 19, BOARD OF SEWER COMMISSIONERS, PLAN OF SEWER EASEMENTS BY METCALF & EDDY INC. MILFORD ENGINEERING DEPT. DWG. DT-S-33.
- "SEWER ASSESSMENT PLAN, WILLIAM ST. EASEMENT, ROWE AVE. TO EASEMENT, WILLIAM ST. TO STA. 26+50, MILFORD ENGINEERING DEPT., DWG. S-85.
- "SEWER ASSESSMENT PLAN, COLLINGSDALE DR. EASEMENT STA. 26+50 TO COLLINGSDALE DR., NEHWART PROD. TO HOUSE 14, MILFORD ENGINEERING DEPT., DWG. S-85B.

- LEGEND
- SIGN
 - BOLLARD
 - LIGHT POLE
 - UTILITY POLE
 - G.V.
 - W.V.
 - HYD.
 - CATCH BASIN
 - M.H.
 - E.O.P.
 - N/F
 - W
 - E
 - T
 - W
 - W
 - W

1. This survey has been prepared in accordance with the Regulations of Connecticut State Agencies, Sections 20-300b-1 through 20-300b-20, "The Minimum Standards for Surveys and Maps in the State of Connecticut", adopted by The Connecticut Association of Land Surveyors, Inc. on Sept. 26, 1996. The type of Survey is a Property & Topographic Survey conforming to Class A-2 and 1-2 accuracy standards.

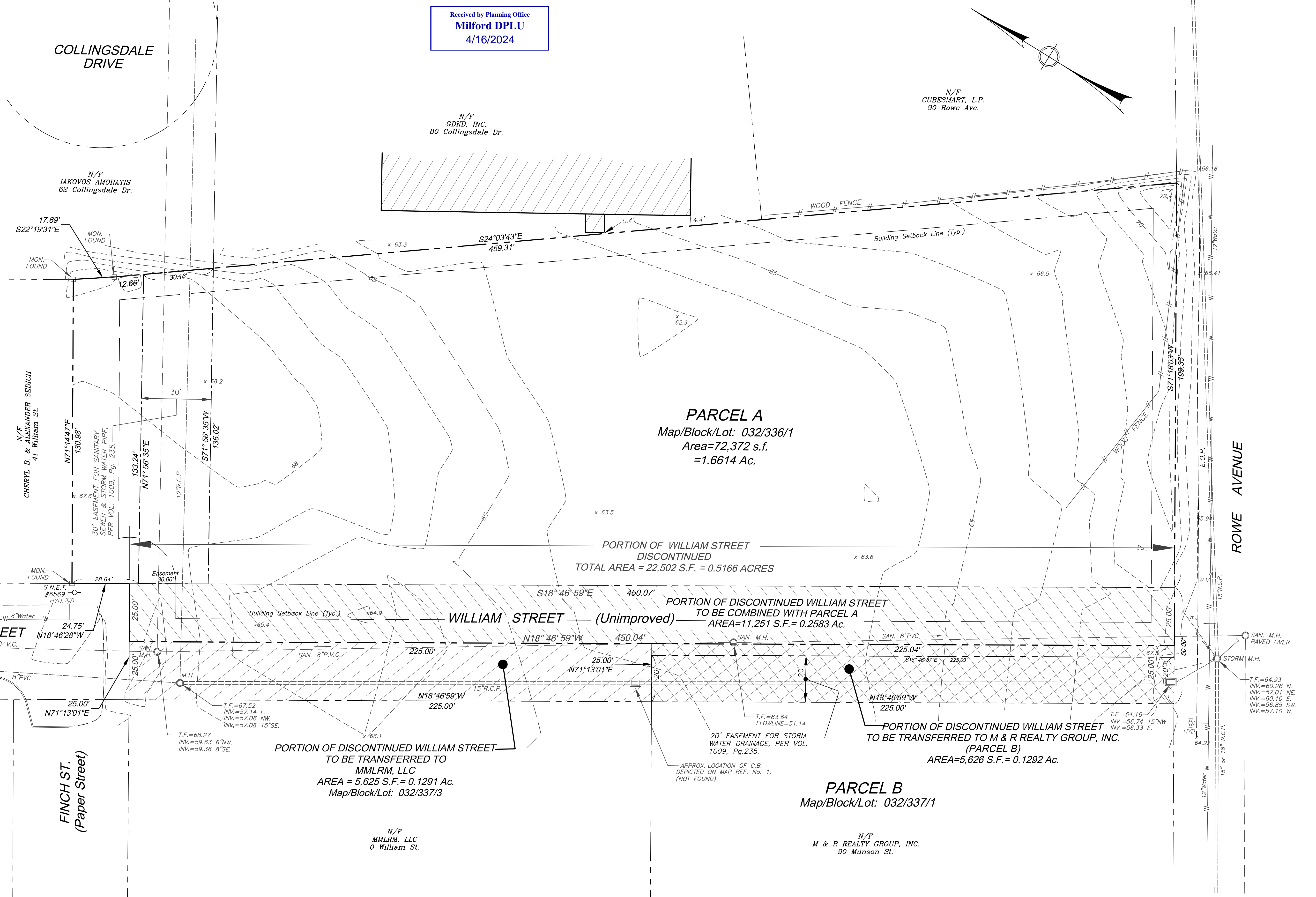
2. Additional property corner monumentation not set.

3. Utilities depicted hereon represent actual field locations of all apparent features, i.e. manholes, catch basins, gas valves, water valves, etc. The locations of underground facilities, structures, and utilities have been plotted from field observations whenever possible and must be considered approximate only. There may be others, the existence of which is presently not known. Field verification is required prior to any construction.

TO MY KNOWLEDGE AND BELIEF THIS MAP IS SUBSTANTIALLY CORRECT AS NOTED HEREON.

PHILIP L. TISO, L.S. CONN. LIC. No. 12324
NO CERTIFICATION IS EXPRESSED OR IMPLIED UNLESS THIS MAP BEARS THE SIGNATURE AND THE EMBOSSED SEAL OF THE ABOVE NAMED LAND SURVEYOR.

Received by Planning Office
Milford DPLU
4/16/2024



REVISIONS		
NO.	DESCRIPTION	DATE

DISCONTINUANCE MAP
OF A PORTION OF
WILLIAM STREET
MILFORD, CONNECTICUT
PREPARED FOR
TOTAL LAWN CARE & MORE, LLC

Rose Tiso & Co., LLC.
ARCHITECTS/SURVEYORS/ENGINEERS
100 WILLOW AVENUE, FAIRFIELD, CT 06424
TEL: 203.254.0000 FAX: 203.254.1044

DATE: JAN. 22, 2024
SCALE: 1" = 20'
DRAWN BY: LJC
CHECKED BY: PLT
SHEET 1 OF 1
DWG: 2368-M1.dwg
PATH: S:\2788-M1-DISCONTINUANCE MAP

