

FEBRUARY 2017



Monday-Wednesday 10-8:30
(Children's 10-8)
Thursday & Saturday 10-5
Friday 1-5

Passport Office
203-783-3309
Tuesday 4-8 & Saturday 10-2
By appointment only

57 New Haven Ave
Milford, CT 06460
203-783-3290
www.milfordlibrary.org

MILFORD PUBLIC LIBRARY

MPL Presents: Cut The Cord



Wednesday, February 8 at 6:30pm
Is your cable, phone and internet bill one of the highest in your household? Cut the cord! The world of internet-based entertainment can replace your costly cable service for a fraction of the price! Instead of

overpaying for a massive selection of channels you never watch, discover how easy it is to pick and choose the services you want. You can try it out for little to no cost! This seminar is presented by James Gifford, owner of NitroPress Communications in Tolland, CT.

Yale Science Diplomats

Monday, February 13 at 6:30pm

Milford Library is pleased to host a series conducted by the Yale Science Diplomats. This first of this five part series is titled "Big Bacteria, Big Pharma, Big Problems." How do antibiotics work, and what parts do they play in medicine, agriculture and history? Three scientists will lay out the real roles of antibiotics, including prescriptions and drug resistance, public health issues, and what big pharmaceuticals and academia are trying to do with them. Come join us for an insightful evening, no health insurance necessary! Yale Science Diplomats are a graduate student group at Yale University dedicated to science policy and science communication.



What are antibiotics, and how do they really affect us?

An Afternoon With Gershwin



Sunday, February 26 at 2pm

Spend a tuneful afternoon listening to the music of the Gershwin brothers! The Julie Harris Trio recounts the lives of the Gershwin brothers in song and narration. Guilford vocalist Julie Harris will be accompanied by Stephen Roane on guitar and by David Childs on keyboard. Harris began her professional singing career in Kansas City, the home of jazz. Accompanist

Roane is an accomplished guitarist and bassist. He and pianist Childs are both members of the Bob Kolb Trio. CDs will be available for sale. Everyone is welcome to this free concert!

Programs

- Wed. 2/1 Needlepoint Guild 10am
- Wed. 2/1 MPL Board Meeting 7:30pm
- Thu. 2/2 Adult Craft—Valentine Cards 2pm *
- Fri. 2/3 FOML—Library Collection Selection Talk 10am
- Fri. 2/3, 10, 17 & 24—Knitters & Quilters 1pm
- Mon. 2/6 Genealogy—Tips For Saving Your Files 1pm
- Tue. 2/7 Tech—Mint (Easy To Use, Handy Banking App) 11am
- Tue. 2/7 Cookies & Coloring For Grown-Ups 6:30pm
- Wed. 2/8 Cut The Cord—Stop Paying Costly Cable Bills! 6:30pm
- Sun. 2/12 FOML—*Love Letters* Play 2pm
- Mon. 2/13 Yale Scientist Diplomats—Science News 6:30pm
- Mon. 2/20 Library Closed For President's Day
- Wed. 2/22 Cut The Cord—Snow Date 6:30pm
- Thu. 2/23 Regional Water Authority—Clean & Safe Water 2pm
- Sun. 2/26 An Afternoon With Gershwin—Julie Harris Trio 2pm
- Tue. 2/28 Tech—Hidden Abilities Of Your Cell phone 11am

*** REGISTRATION REQUIRED—Call 203-783-3292**

Dates and times are subject to change.

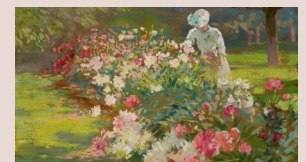
Check www.milfordlibrary.org for an updated list of events.

New Museum Pass

FLORENCE GRISWOLD MUSEUM
Home of American Impressionism

The FGM fosters the understanding of American Art, with emphasis on the art, history and landscape of CT.

Visit our website to view a full list of passes to cultural attractions.



UPCOMING EXHIBITION
February 10-May 28, 2017
Matilda Browne:
Idylls of Farm and Garden

MOVIE TUESDAYS | 2PM

2/7: *Beasts of the Southern Wild*

2/14: *Fruitvale Station*

2/21: *Selma*

2/28: *Ghosts of Mississippi*

Join us at the library for these features highlighting Black History Month.

Free popcorn for all who attend!

BOOK DISCUSSION GROUPS

ROMANCE: Thursday, February 9 at 10am
Heartbreaker by Julie Garwood

EVENING: Tuesday, February 21 at 7pm
The Rocks by Peter Nichols

CLASSIC: Thursday, February 23 at 10am
Native Son by Richard Wright

CHILDREN'S PROGRAMS

* Register at 203-783-3312

PRESCHOOL STORYTIME

Mondays and Tuesdays at 10am

Ages 3 & up with a caregiver. Enjoy stories, a craft and new friends!

TODDLER TIME

Wednesdays at 10am & 11am

Ages 2 & under with a caregiver. Let's share songs and stories!

TAKE YOUR CHILD TO THE LIBRARY DAY

Saturday, February 4 at 11am

Author Bonnie Feuer and illustrator Sharai Platt will read and talk about their new book, *Voice from the Woods*. Craft activities all day and a brand new FREE book for every child who uses their library card.



LEGO® BUILD-A-THON

Tuesday, February 7 from 5:30pm-7pm

Ages 5 & up. The library will provide the LEGO® bricks, you provide the imagination! Creations may be displayed in the library!

STAY & PLAY THURSDAY

Thursdays, February 9 & 23 from 10am-12pm

Stop by the library and play games, build with LEGOs® and do a simple art activity. You can even share a book!

NO-COOK KIDS' COOKING CLASS *

Monday, February 13 at 6:30pm

Make some healthy, yummy food with ShopRite's retail dietician.

CHESS CLUB *

Tuesday, February 14 from 6:30pm-7:30pm

Grades K-12. Sponsored by Milford's Promise & Milford Police Union. Sets will be provided or you may bring your own. All skill levels.

MUSIC TOGETHER *

Wednesday, February 15 at 6:15pm

Ages 0-5. This is an opportunity for caregivers and children to share music, instruments and movement. Kids of all abilities are welcome!

CREATIVE WRITING CLUB FOR TWEENS *

Wednesday, February 22 from 6pm-7:30pm

Ages 9-13. Each meeting will consist of writing prompts, peer workshopping and fun activities to spark your creative genius! All skill levels welcome. We will provide the pens and refreshments.

CRAZY 8s MATH *

Mondays, February 27, March 6, 13 & 20 at 6pm

Grades K-2. Does glow-in-the dark geometry sound like fun? Join Crazy 8s, where you will build stuff, make a mess and love math!

YOUNG ADULT PROGRAMS

* Register at 203-783-3292

Crunchyroll Anime Club *



Monday, February 27 from 6pm-7:30pm

Grades 6-8. Students are invited to the Milford Public Library for the next meeting of the Crunchyroll Anime Club. The YA Librarian will be showing episodes from Crunchyroll, an anime streaming site, and will be offering an opportunity for fans to discuss anime and manga. MPL has been granted a premium account through Crunchyroll's outreach program. Register at 203-783-3292. For more information, call Diana at 203-701-4554.

Teen Advisory Group

Grades 9-12. Tag you're it! Are you interested in being a positive influence on your library? Members of TAG may earn volunteer hours helping the YA Librarian with programs, planning, displays and more! We'll be having fun, too, so bring an old friend or meet a new one! Apply by filling out an application at the library.



3D PRINTER TRAINING *

Wednesdays, February 1, 8 & 15 from 6pm-7pm

Ages 8-Adult (12 and under accompanied by an adult). Learn about 3D printing and receive small group instruction on how to use the Ultimaker 2.

3D PRINTED VALENTINE JEWELRY *

Saturday, February 11 from 1pm-2:30pm

Ages 8-Adult (12 and under accompanied by an adult). Make Valentine jewelry from trinkets printed on our 3D printer!

CARDBOARD CREATION WORKSHOP *

Saturday, February 18 from 1pm-3pm

Ages 8-Adult (12 and under accompanied by an adult). Create objects out of cardboard! The goal is to use your imagination!

PIN-A-PET

Saturday, February 25 from 11am-3pm

All Ages. Drop-in with a small picture of your pet, and make a pin to wear and take home! No registration necessary.

* Register at 203-783-3292

MILFORD INVENTION CONVENTION: Young Inventor Workshops

Saturdays, February 4 & 25 at 2pm for K-2 & 3:15pm for 3-5

Register at www.milfordedfoundation.org/invent for these interactive classes designed to inspire solutions to everyday problems. Present at the 4th Annual MIC on March 11! Milford residents only.

GALLERY

Emery Roth II

DISPLAY CASES

Ronda Zalenski

Thank you to the Friends of the Milford Library for generously funding our programs.



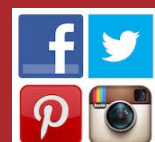
ONE CITY ONE STORY

2017

Check out our website and Facebook page for titles and upcoming programs!

FOLLOW US

on



#milfordpubliclibrary