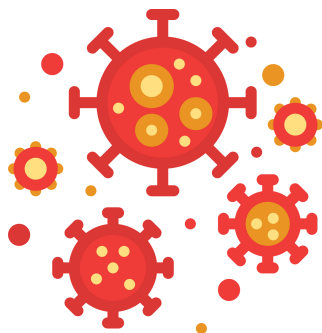


# MILFORD HEALTH DEPARTMENT COVID-19 MONTHLY REPORT

*July 2023 Edition*



The following information is included in this report:

**DATA OVERVIEW**

PAGE 2

**IMPACT OF COVID-19 BY RACIAL  
AND ETHNIC GROUPS**

PAGE 3

**COVID-19 BY GENDER**

PAGE 4

**BY AGE**

PAGE 5



# Data Overview



IN THIS MONTH...

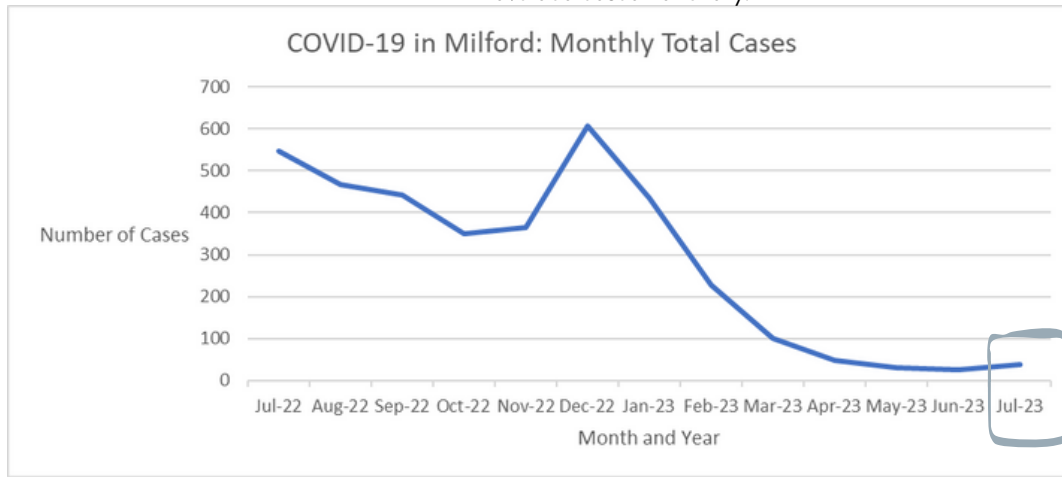
# 38

## COVID-19 CASES WERE REPORTED

LET'S SEE THE NUMBERS...

**A very slight increase in cases was recorded for this month.**

With **38** cases of COVID-19 recorded in Milford for the month, it's an increase from the **25** cases that were recorded in June. Still, it is a much lower number than the number of cases recorded last July (**548**). The decrease could be attributed to how testing rates have decreased nationally.



FOLLOWING THE DATA 

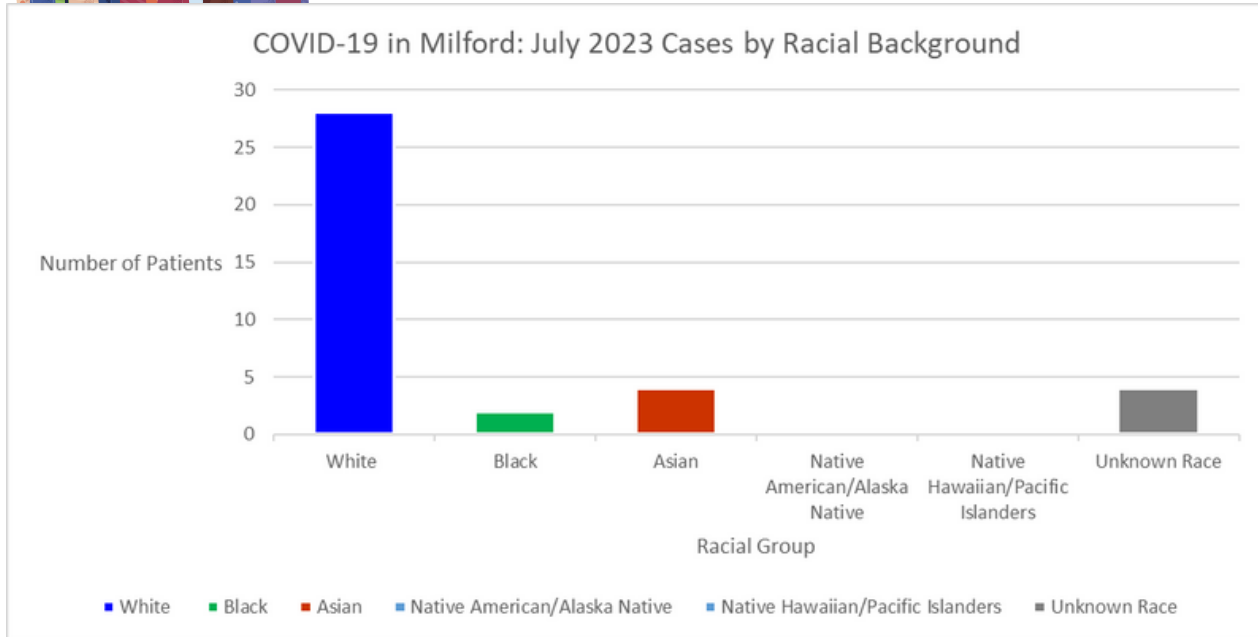
# 0 COVID-19 Deaths

No deaths attributed to COVID-19 were recorded for the month of July. This represents no change from the previous months, as COVID-19 deaths have not been recorded in Milford since March.

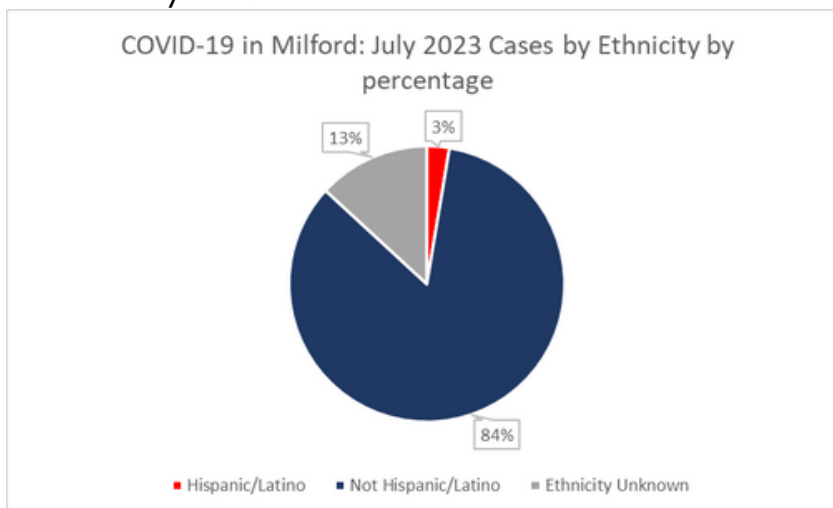
FOLLOWING THE DATA 



# Impact of COVID-19 by Racial and Ethnic Groups



As can be seen, **Black** Americans accounted for **5%** of all COVID-19 cases but constitute **2.3%** of the city's population. Similarly, **Asian** Americans form **6.3%** of the population, but account for **10%** of all cases. **White** Americans, on the other hand, form **84.6%** of the city's population but account for **74%** of all cases. As is the case both statewide and nationally, Black Americans were disproportionately affected by COVID-19.

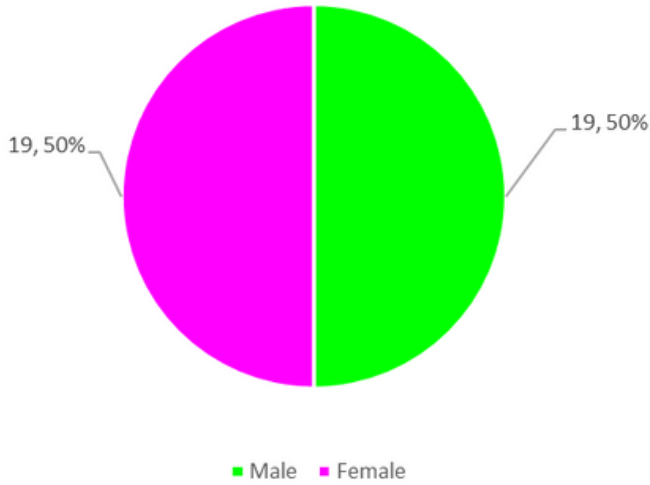


Only **3%** of the COVID-19 cases in Milford were reported in the Hispanic/Latin American Community. It is a lower share than the population's representation in the 2020 U.S. Census.



# COVID-19 by Gender

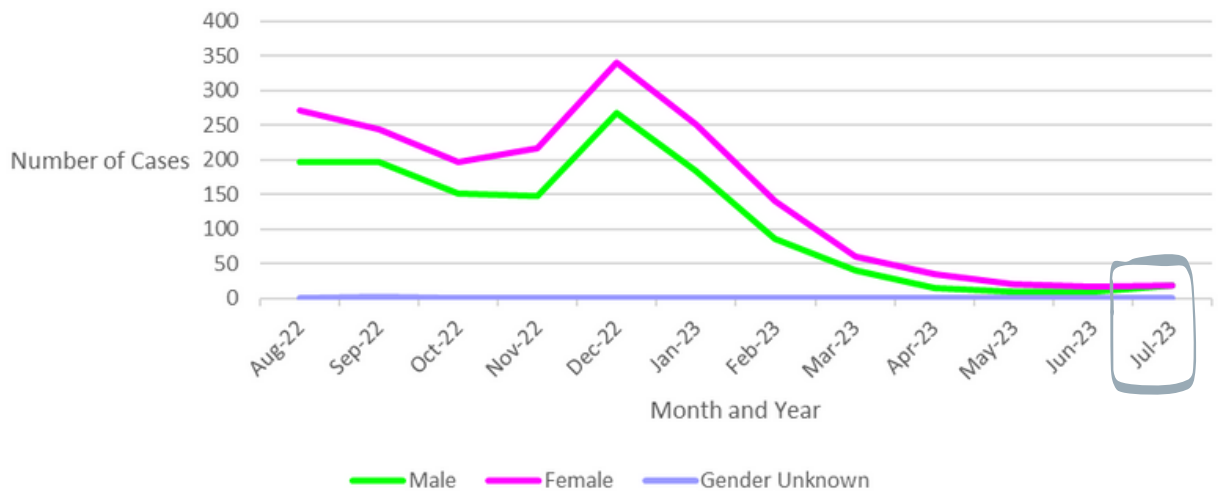
COVID-19 in Milford: July 2023 Cases by Gender



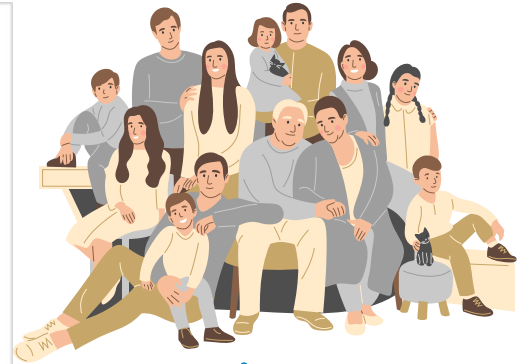
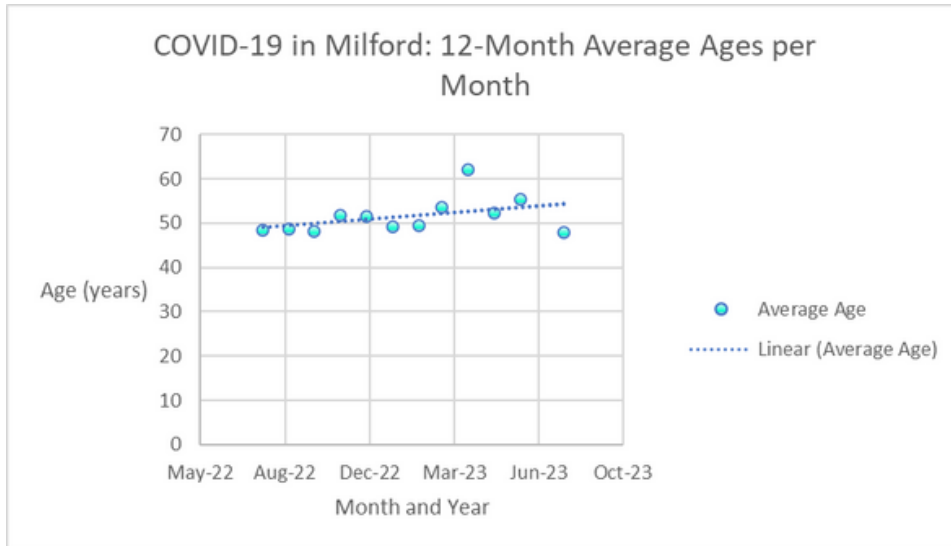
Males and females each accounted for half of the caseload of COVID-19. There were no significant discrepancies between them. This is in sharp contrast with the past 12 months, where females consistently reported more COVID-19 cases than males did.



COVID-19 in Milford: 12-Month Cases by Gender, comparative



# COVID-19 by Age-related Statistics



The majority of patients who reported cases of COVID-19 for the month have been in their late 40s, with an average age of around **48** years old. This decrease in age contrasts with previous months; the immediate months prior showed that most patients were at least 50.

Report by: **Avinash V. Veeraraghav, MPH**  
*Epidemiologist*

Edited and Reviewed by: **Jennifer Clarke-Lofters, MPA**  
*Community Health Coordinator*  
**Joan Campbell, MSN, RN**  
*Director of Nursing*  
**Deepa Joseph, MPH**  
*Health Director*

