

CITY OF MILFORD, CONNECTICUT

Founded 1639



Office of The Sewer Commission
Thomas C. Parsons Office Complex

70 West River Street

SEWER COMMISSION PUBLIC HEARING

INDIAN RIVER INTERCEPTOR PROJECT

Milford, CT 06460

203-783-3249

CANCELLED FOR OCTOBER 7, 2010

THURSDAY, OCTOBER 7, 2010 – 7:00 P.M. - CONFERENCE ROOM A
PARSON'S COMPLEX – 70 WEST RIVER STREET, MILFORD

THIS PUBLIC HEARING HAS BEEN CANCELLED

WESTCOTT AND MAPES, INC.

Indian River Interceptor – Instituting Eminent Domain Proceedings with reference to the condemnation of a portion of land for permanent and temporary easements for the installation of gravity sewers under Sewer Contract Indian River Interceptor Replacement Project.

THE REGULAR MEETING OF THE SEWER COMMISSION WILL BE HELD AT 7:30 ON OCTOBER 7, 2010 IN CONFERENCE ROOM A AT THE PARSON'S COMPLEX – 70 WEST RIVER STREET, MILFORD.

CITY OF MILFORD, CONNECTICUT

Founded 1639



Office of The Sewer Commission
Thomas C. Parsons Office Complex

70 West River Street

SEWER COMMISSION PUBLIC HEARING

INDIAN RIVER INTERCEPTOR PROJECT

Milford, CT 06460

203-783-3249

CANCELLED FOR OCTOBER 7, 2010

THURSDAY, OCTOBER 7, 2010 – 7:00 P.M. - CONFERENCE ROOM A
PARSON'S COMPLEX – 70 WEST RIVER STREET, MILFORD

THIS PUBLIC HEARING HAS BEEN **CANCELLED**

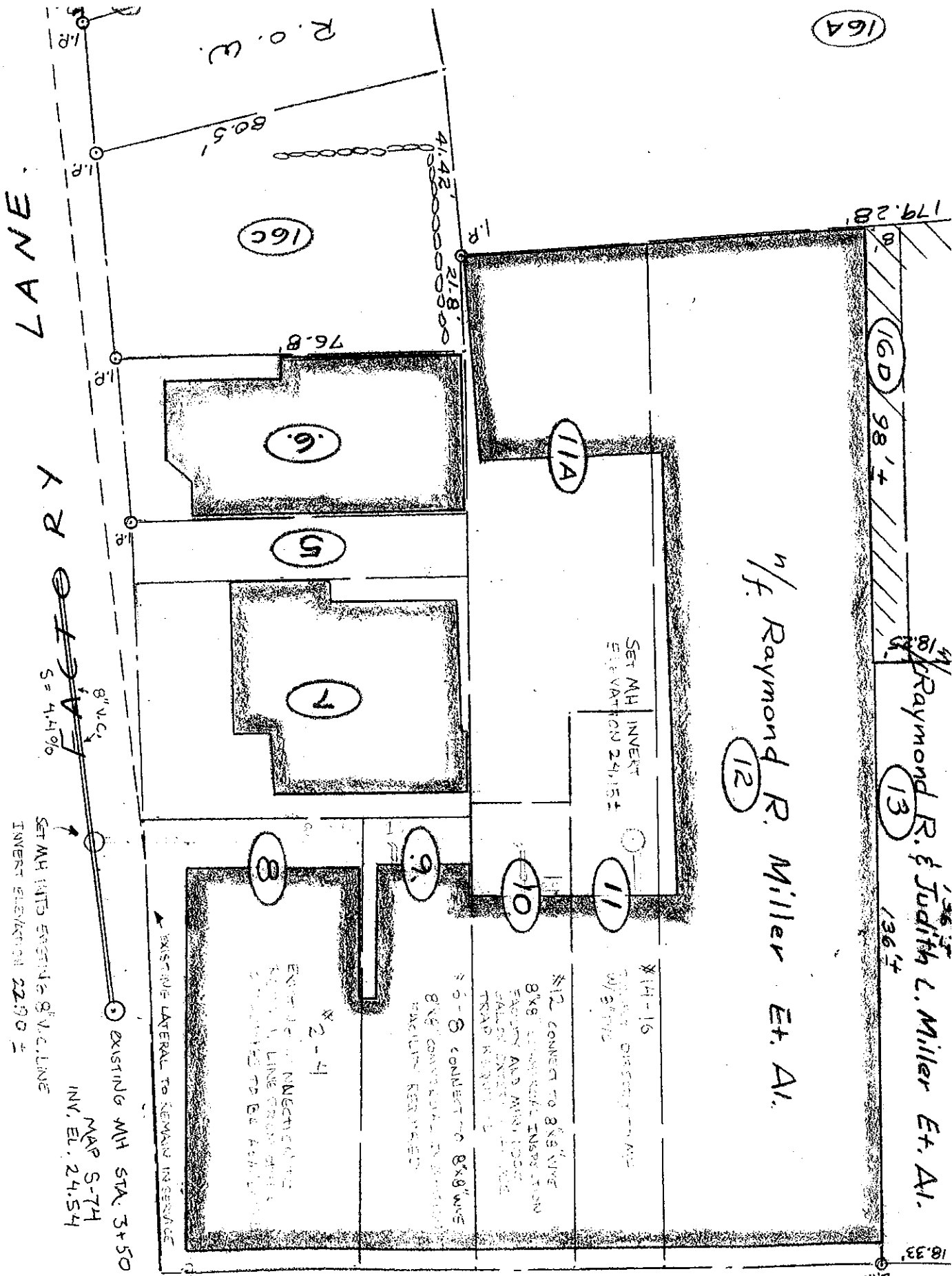
WESTCOTT AND MAPES, INC.

Indian River Interceptor – Instituting Eminent Domain Proceedings with reference to the condemnation of a portion of land for permanent and temporary easements for the installation of gravity sewers under Sewer Contract Indian River Interceptor Replacement Project.

THE REGULAR MEETING OF THE SEWER COMMISSION WILL BE HELD AT 7:30 ON OCTOBER 7, 2010 IN CONFERENCE ROOM A AT THE PARSON'S COMPLEX – 70 WEST RIVER STREET, MILFORD.

18/ Raymond R. & Judith L. Miller Et. Al.
13
136'±

ⁿ/f. Raymond R. Miller Et. Al.



LANE

27

8" V.C.
S = 4.41%

EXISTING MH STA. 3+50

MAP S-74
INV. EL. 24.54

SET MH INTO EXISTING 8" M.C. LINE
INVERT ELEVATION 22.90 ±

$$, \sigma = 1$$