

# Beaver Brook

The Beaver Brook marsh walking trail is on private property with a public access easement. It loops along the edge of a 41 acre fresh water marsh and the Beaver Brook canal. A boardwalk that was destroyed in a 2012 fire was replaced in 2020 and now provides a full loop around the marsh. An off-street parking lot has been completed and walking trail enhancements provide access to the new boardwalk for people of all abilities.

Waterfowl and other wildlife can be viewed in the marsh and nearby forested areas. Ospreys have nested nearby and are seen here. Turtles, green frogs, and northern water snakes can be seen along the edge of the marsh and sunning themselves on marsh logs.

Butterflies, dragonflies, and damselflies can be seen along the trail between the marsh and the Beaver Brook canal.

This protected marsh habitat is bordered by Metro North Railroad and nearby I-95. Walking along this conservation area is reminder that these ecological areas are important habitats for wildlife, buffers for people, and water quality.

Managing the Phragmites Common Reed and other invasive plants are being planned during the boardwalk restoration project. The Phragmites are an example of a non-native invasive plant that degrades the ecosystem habitat and creates a fire hazard.



*Photo by Steve Johnson, City of Milford*

## Trail Description:

### Easy Hike

This walk travels through a relatively flat area on gravel trails around a wetland area. Currently there is no boardwalk to connect the existing trail loop, however there are plans for a new boardwalk in the coming years.

*Total trails distance is approx. 0.89 miles*

## Directions and Parking:

An ADA accessible parking lot is available at 553 West Avenue. This is approximately 0.2 miles from U.S. Route 1, Boston Post Road.

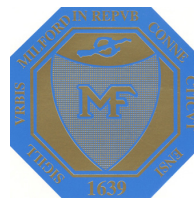
## Permitted/Prohibited Activities:

Trails are open ½ hour before sunrise and ½ hour after sunset or as posted. Stay on the trails. Dogs must be leashed at all times. No motorized vehicles are allowed and alcoholic beverages are prohibited.



*Photo by Steve Johnson, City of Milford*

**Total Trails Length:** Approx. 0.89 miles

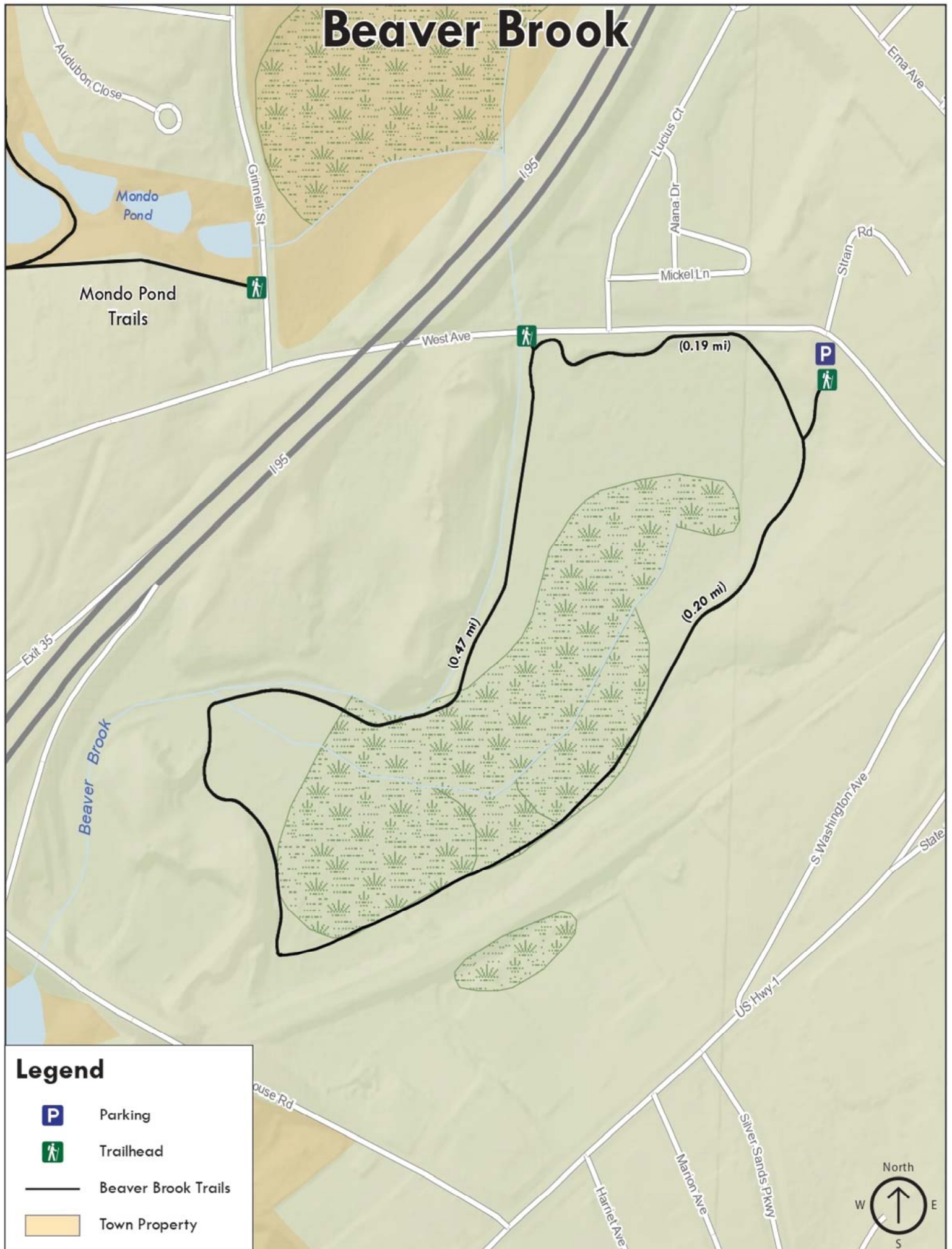


## For more information about this location, contact:

City of Milford  
Open Space & Sustainability Office  
(203) 878-7812 or (203) 783-3201



# Beaver Brook



## Legend



Parking



Trailhead



Beaver Brook Trails



Town Property