

The City owned Solomon Woods property is 100 acres lying west of Eisenhower Park on West River Street. It offers a number of unique wetland forest features that are aesthetically captivating and ecologically important. Vernal pools at Solomon Woods are vital breeding grounds for amphibians such as wood frogs and spotted salamanders in the early spring.

Wepawaug Schist ledge outcroppings form ridges that the trail overlooks into a large central wetland and surrounding hillsides. Evidence of the last glacier period can still be seen from groves carved into the bedrock on the east side of the trail.

Rock walls and abandoned wells offer a glimpse into the past when portions of this property were farmed. Tulip, Northern Red Oak, Red Maple, American Beech, Black Birch, and White Pine are the dominant trees. A diverse understory of shrubs, ferns, and other plants provide a landscape diversity unlike other public trails in Milford.

The main trail loops around Solomon Woods with several other trails connecting to the main trail. There is a small trail loop near the trail head for young families without any stream crossings. Along the main trail loop be careful when crossing five small streams that have stepping stones. Snow cover provides great snowshoeing or cross country skiing.

There is diverse wildlife in this ecologically sensitive habitat. For the safety of the wildlife and your dogs, please keep them leashed while enjoying the trails.

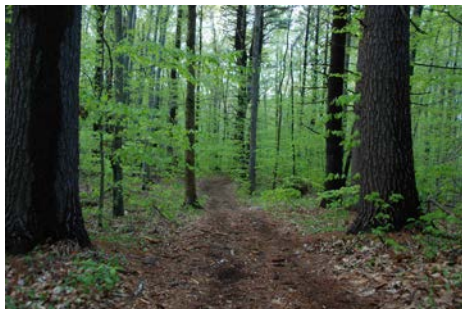


Photo by Steve Johnson, City of Milford

Directions and Parking:

Limited parking is available at 810 West River Street. This is approximately 0.4 miles south of Wolf Harbor Road and 0.3 miles north of Fresh Meadow Lane.

Permitted/Prohibited Activities:

Trails are open ½ hour before sunrise and ½ hour after sunset or as posted. Stay on the trails. Dogs must be leashed at all times. No motorized vehicles are allowed and alcoholic beverages are prohibited.



Hiking



Pets on
Leash



Wildlife
Viewing

For more information about this location, contact:

City of Milford
Open Space and Natural Resources Office
(203) 878-7812 or
(203) 783-3201

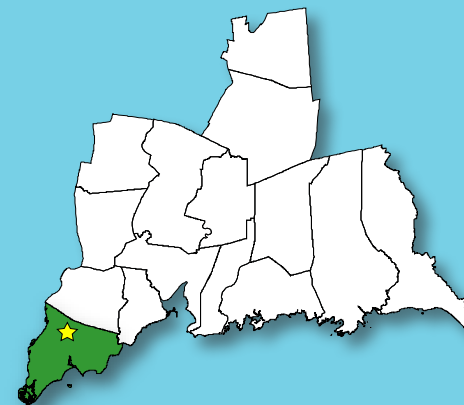
Questions regarding this brochure can be addressed to
South Central Regional Council of Governments
Phone: (203) 234-7555/Fax: (203) 234-9850
E-mail: trails@scrcog.org

Scan QR Code to access the South Central Regional Council of
Governments Recreational Trails Webpage



Recreational Trails South Central Connecticut

Solomon Woods



Milford, CT



Solomon Woods



Photo by Steve Johnson, City of Milford

Trail Description:

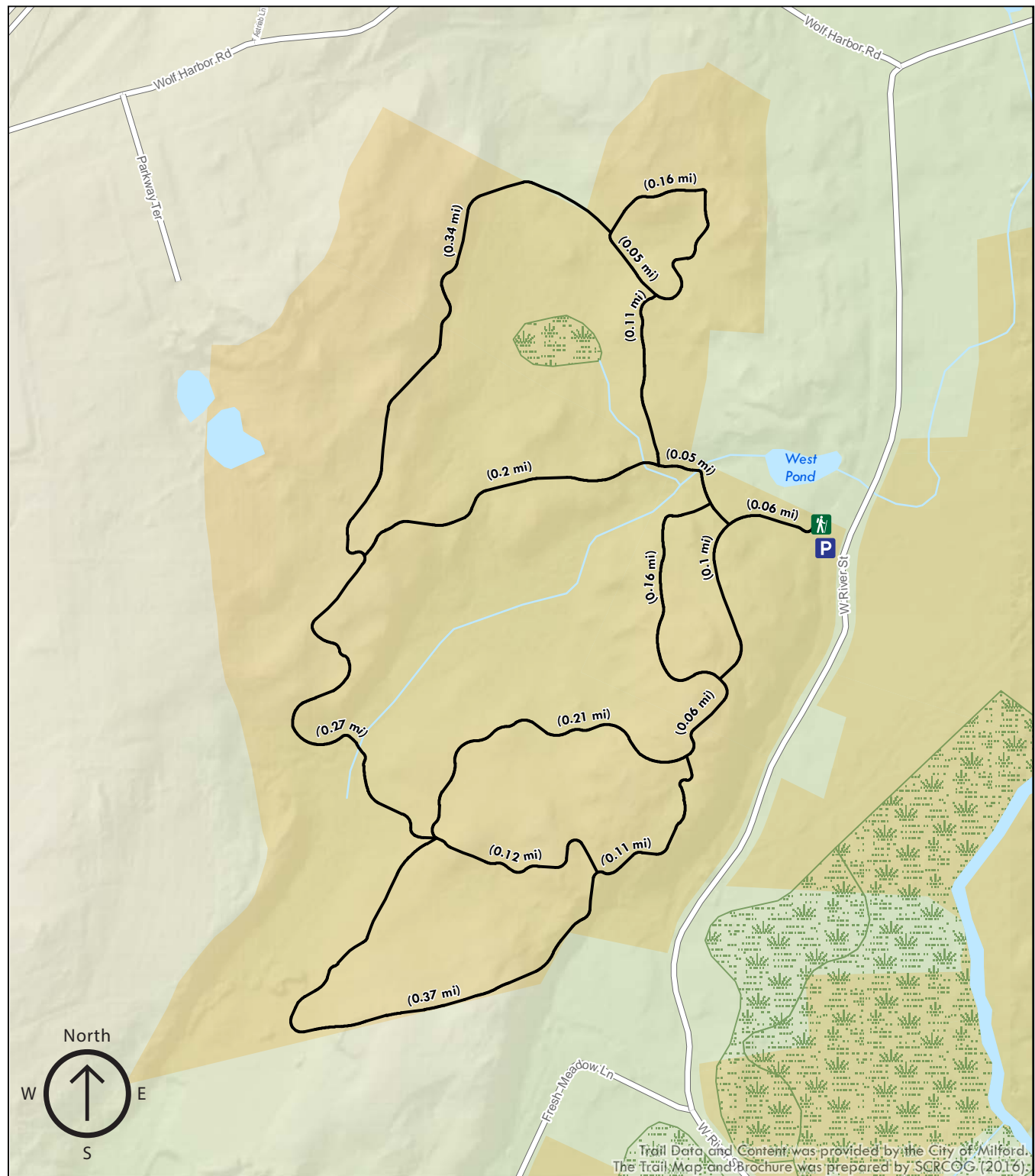
Moderate Hike

The Solomon Property trails wind through various different ecologies and terrains. The trails can get steep and muddy so use caution.

Total trail distance is approx. 2.37 miles

Legend

-  Parking
-  Trailhead
-  Solomon Property Trails
-  Town Property
-  Wetlands



Trail Data and Content was provided by the City of Milford.
The Trail Map and Brochure was prepared by SRCOC (2016).