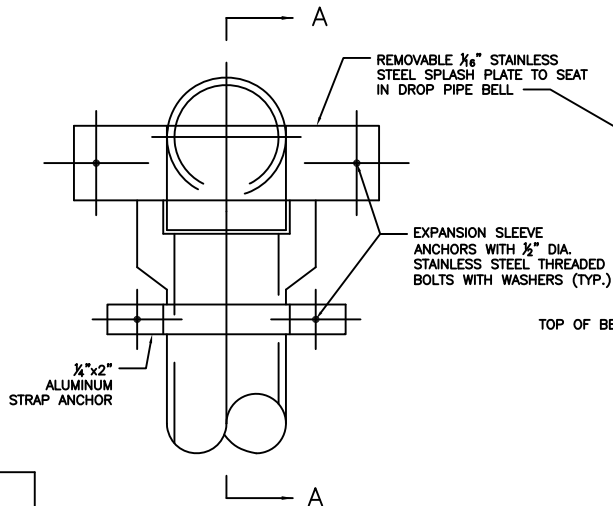
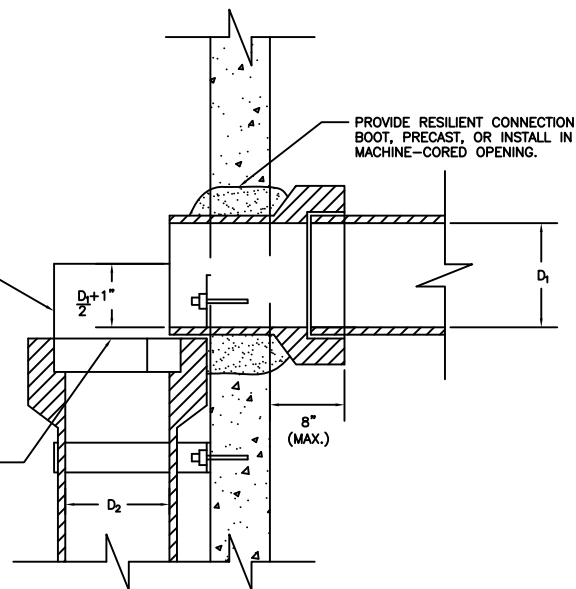


NOTES:

1. DETAILS OF DROP MANHOLE TO BE SAME AS FOR TYPICAL MANHOLE EXCEPT AS SHOWN.
2. STAINLESS STEEL TO BE PER ASTM C425.
3. COUPLING: ELASTOMERIC PLASTIC SLEEVE WITH STAINLESS STEEL CLAMP BANDS. MATERIALS PER ASTM C425.
4. RUBBER RING WATER STOP: MATERIALS PER ASTM C923.



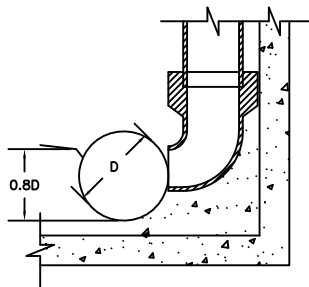
ALUMINUM SPLASH PLATE DETAIL
N.T.S.



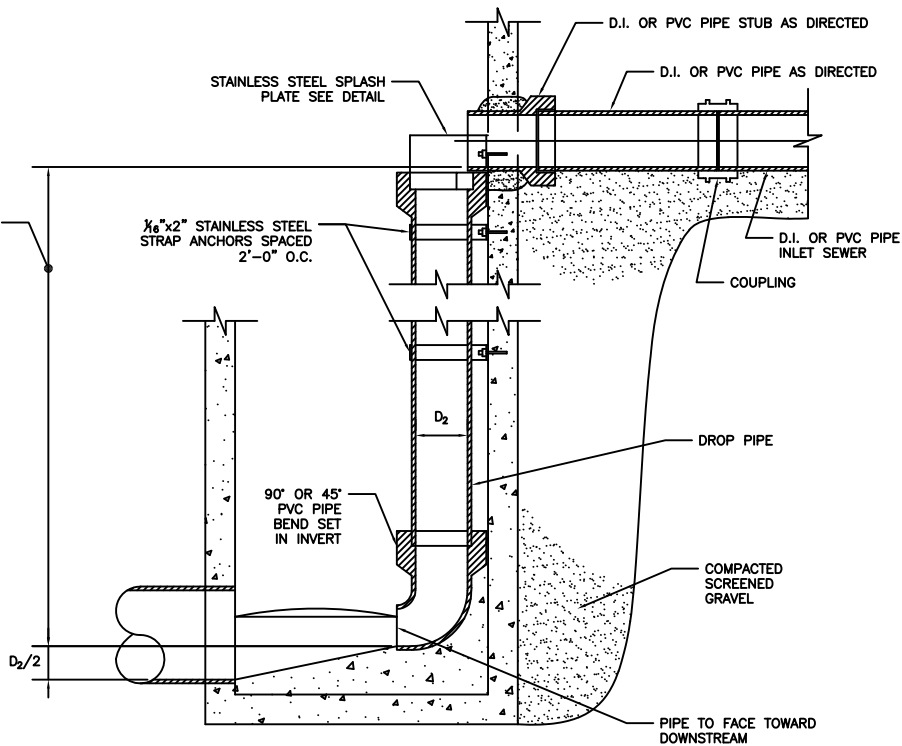
SECTION A-A
N.T.S.

| PIPE SIZE TABLE | |
|-------------------------------|-----------------------------|
| PIPE SIZES (IN) | |
| INLET SEWER D ₁ | DROP PIPE D ₂ |
| 12 | 10 |
| 10 | 8 |
| 8 | 8 |
| 6 | 6 |
| 5 | 5 |

PAYMENT LIMITS
FOR DROP INLETS



INVERT DETAIL AT SIDE DROPS
N.T.S.



INVERT DETAIL AT MAIN RUN DROPS
N.T.S.

NOTE: THIS DRAWING SUPERSEDES ALL PRIOR VERSIONS. DRAWING MAY BE REVISED WITHOUT PRIOR NOTICE. CONTACT ENGINEERING DEPARTMENT FOR CURRENT VERSION.

INFORMATION SHOWN ON THIS DETAIL WAS PREPARED FOR USE BY THE CITY OF MILFORD. RESPONSIBILITY FOR REUSE FOR THIS INFORMATION RESIDES WITH THE USER. THE CITY OF MILFORD, ITS EMPLOYEES, ASSIGNS OR AGENTS ARE TO BE HELD HARMLESS AGAINST ANY LIABILITY RESULTING FROM ANY OCCURRENCE ASSOCIATED WITH THE REUSE OF THIS INFORMATION. ALTERATION OF THIS STANDARD DETAIL IS STRICTLY UNAUTHORIZED WITHOUT THE APPROVAL OF THE CITY ENGINEER.

INSIDE DROP INLET

CITY OF MILFORD
DEPT. OF PUBLIC WORKS
ENGINEERING BUREAU
GREGORY PIDLUSKI, P.E., L.S.
CITY ENGINEER

SCALE:
N.T.S.

DATE:
JUNE 19, 2017

SHEET:
S-7

