











Appendix B

Consolidated Plan Maps
Project Locations
Milford Census Map

LEGEND:

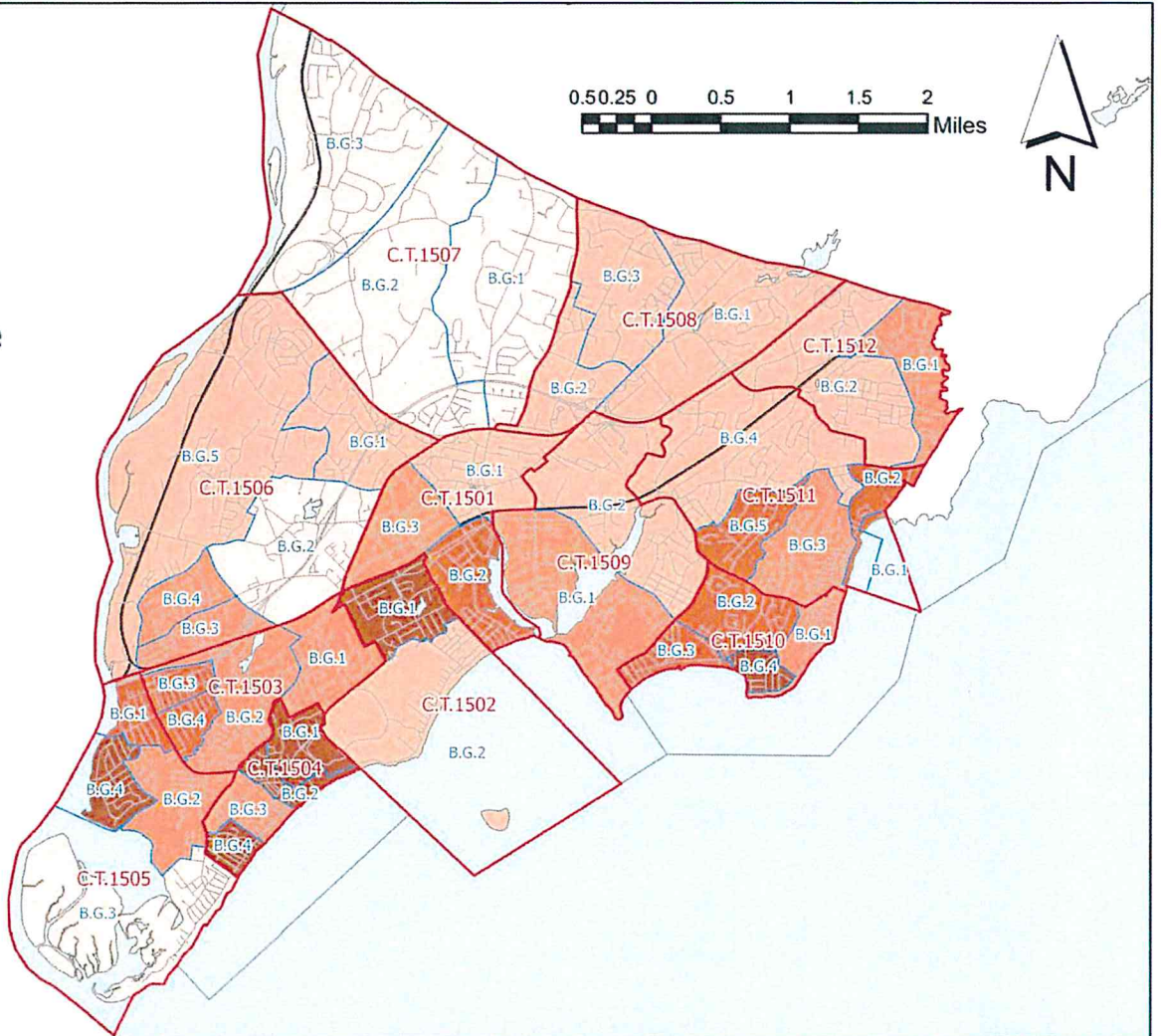
-  Census Tracts
-  Block Groups
-  Water
-  Roads
-  Railroads

**People per Sq. Mile
by Block Group**

-  ≤ 0.0005206
-  ≤ 0.0009483
-  ≤ 0.001597
-  ≤ 0.002078
-  ≤ 0.003115

Source: 2014-2018 ACS
Five Year Estimates

0.50.25 0 0.5 1 1.5 2 Miles



**CITY OF MILFORD, CONNECTICUT
POPULATION DENSITY BY BLOCK GROUP**

**URBAN
DESIGN
VENTURES**

LEGEND:

- Census Tracts
- Block Groups
- Water
- Roads
- Railroads

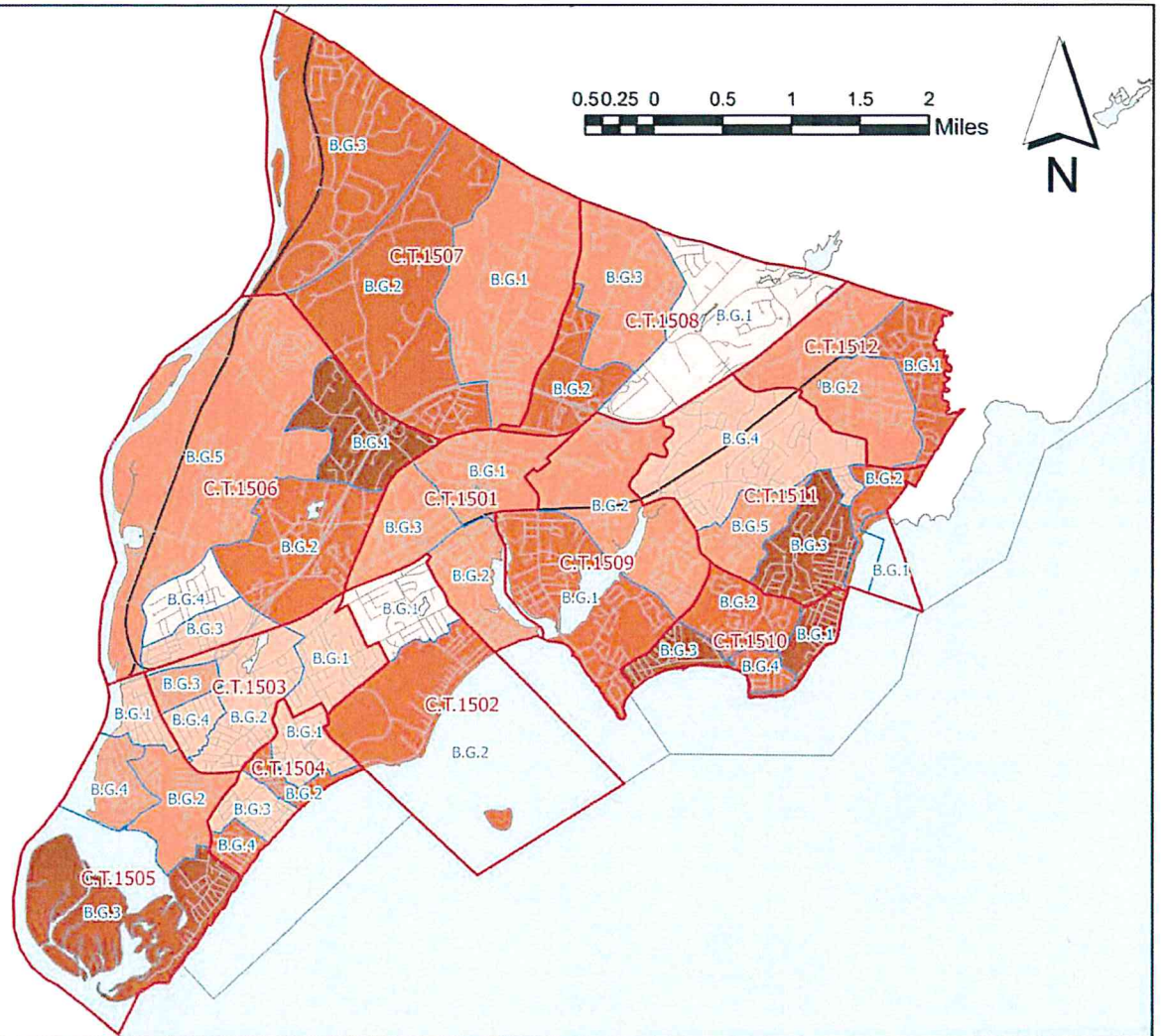
White Percentage

By Block Group

- 0-66.10%
- 66.11-76.95%
- 76.96-86.38%
- 86.39-92.68%
- 92.69-100.00%

Source: 2014-2018 ACS
Five Year Estimates

0.5 0.25 0 0.5 1 1.5 2 Miles



**CITY OF MILFORD, CONNECTICUT
WHITE POPULATION BY BLOCK GROUP**

**URBAN
DESIGN
VENTURES**

LEGEND:

- Census Tracts
- Block Groups
- Water
- Roads
- Railroads

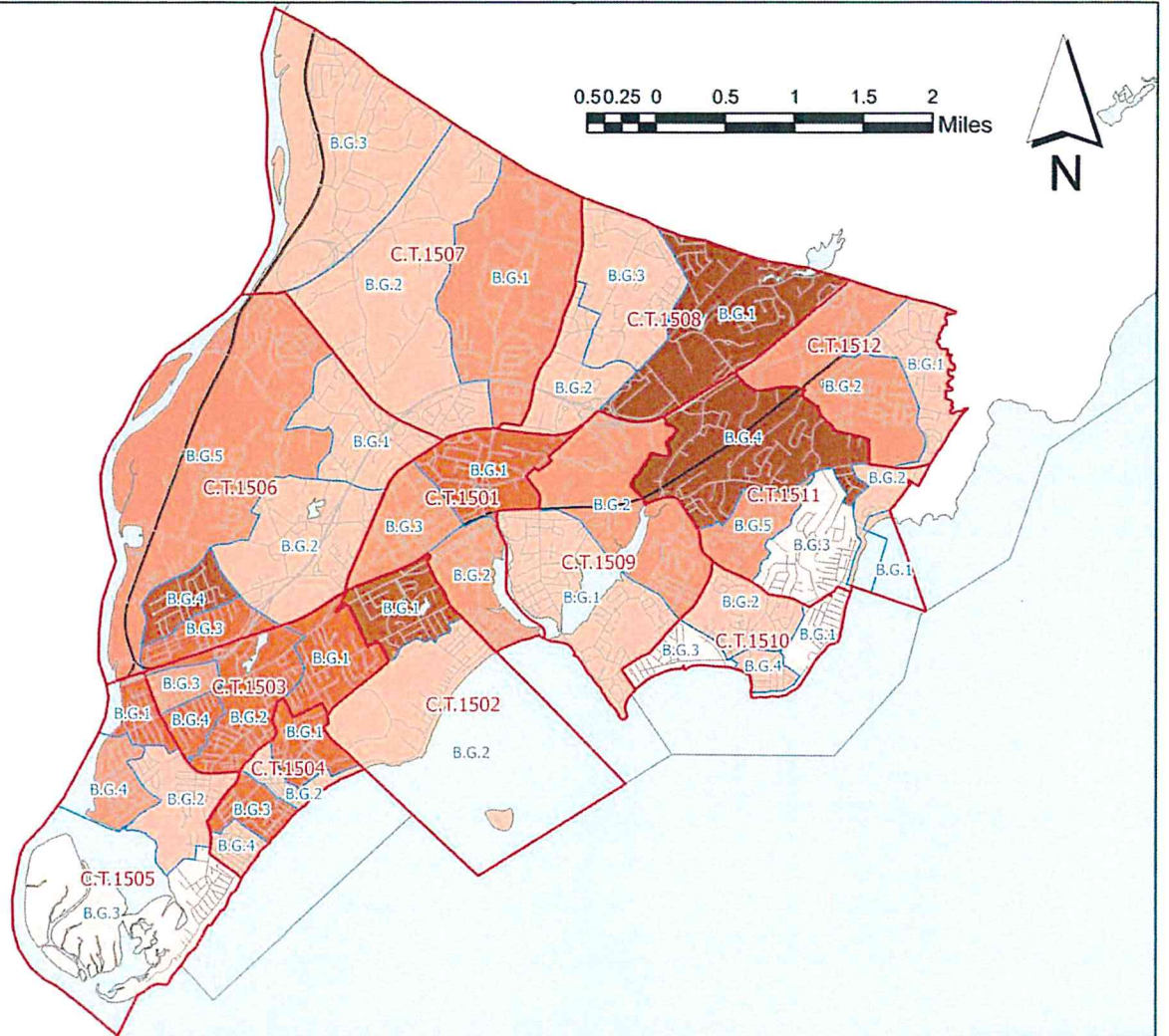
Minority Percentage

By Block Group

- 0-5.1%
- 5.2-13.9%
- 14.0-21.8%
- 21.9-32.6%
- 32.7-44.3%

Source: 2014-2018 ACS
Five Year Estimates

0.5 0.25 0 0.5 1 1.5 2 Miles



**CITY OF MILFORD, CONNECTICUT
MINORITY POPULATION BY BLOCK GROUP**

**URBAN
DESIGN
VENTURES**

LEGEND:

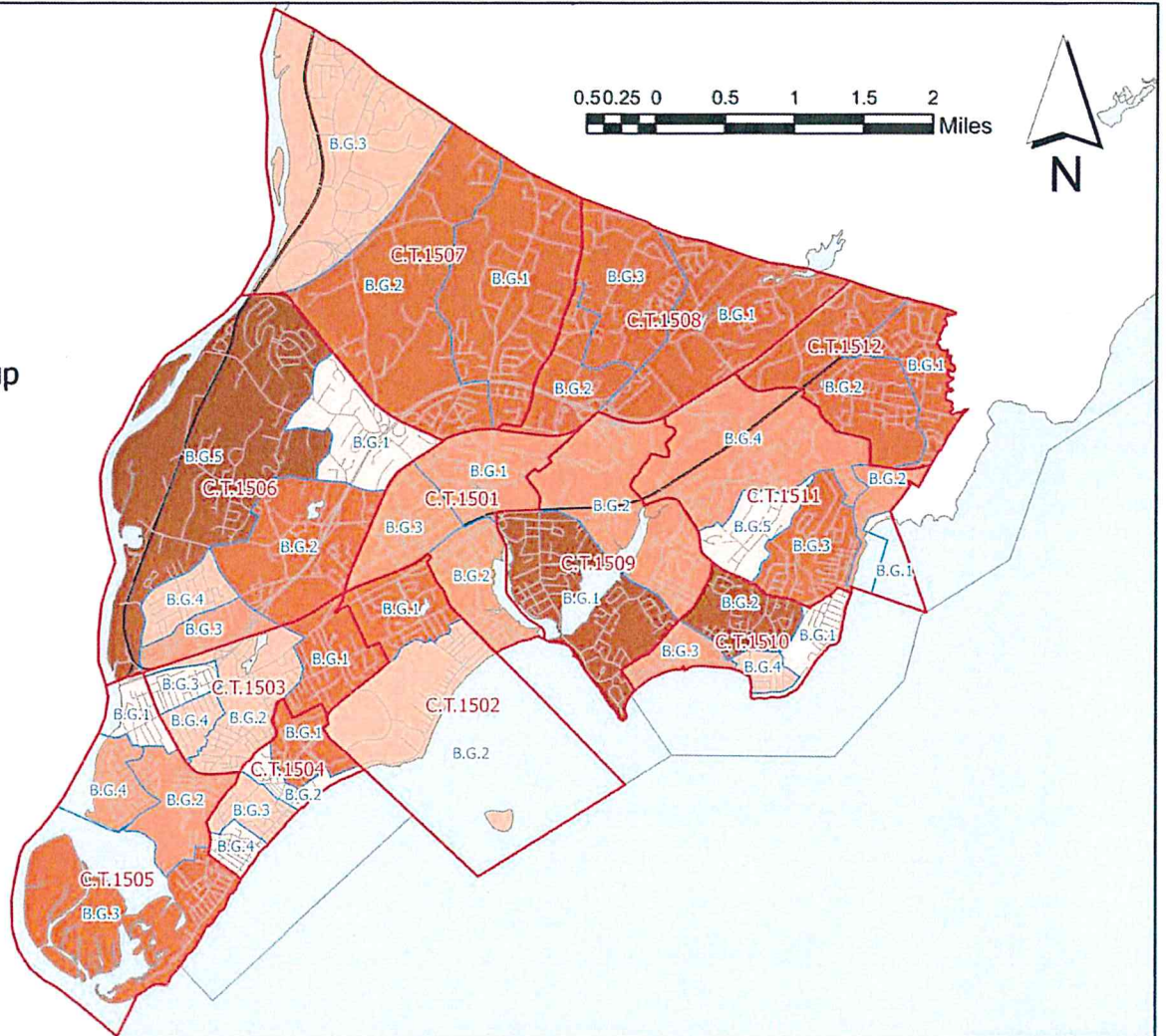
- Census Tracts
- Block Groups
- Water
- Roads
- Railroads

**Population Aged
65+ by Block Group**

- 0-101
- 102-170
- 171-275
- 276-384
- 385-606

Source: 2014-2018 ACS
Five Year Estimates

0.5 0.25 0 0.5 1 1.5 2 Miles



**CITY OF MILFORD, CONNECTICUT
POPULATION AGED 65+ BY BLOCK GROUP**

**URBAN
DESIGN
VENTURES**

LEGEND:

- Census Tracts
- Block Groups
- Water
- Roads
- Railroads

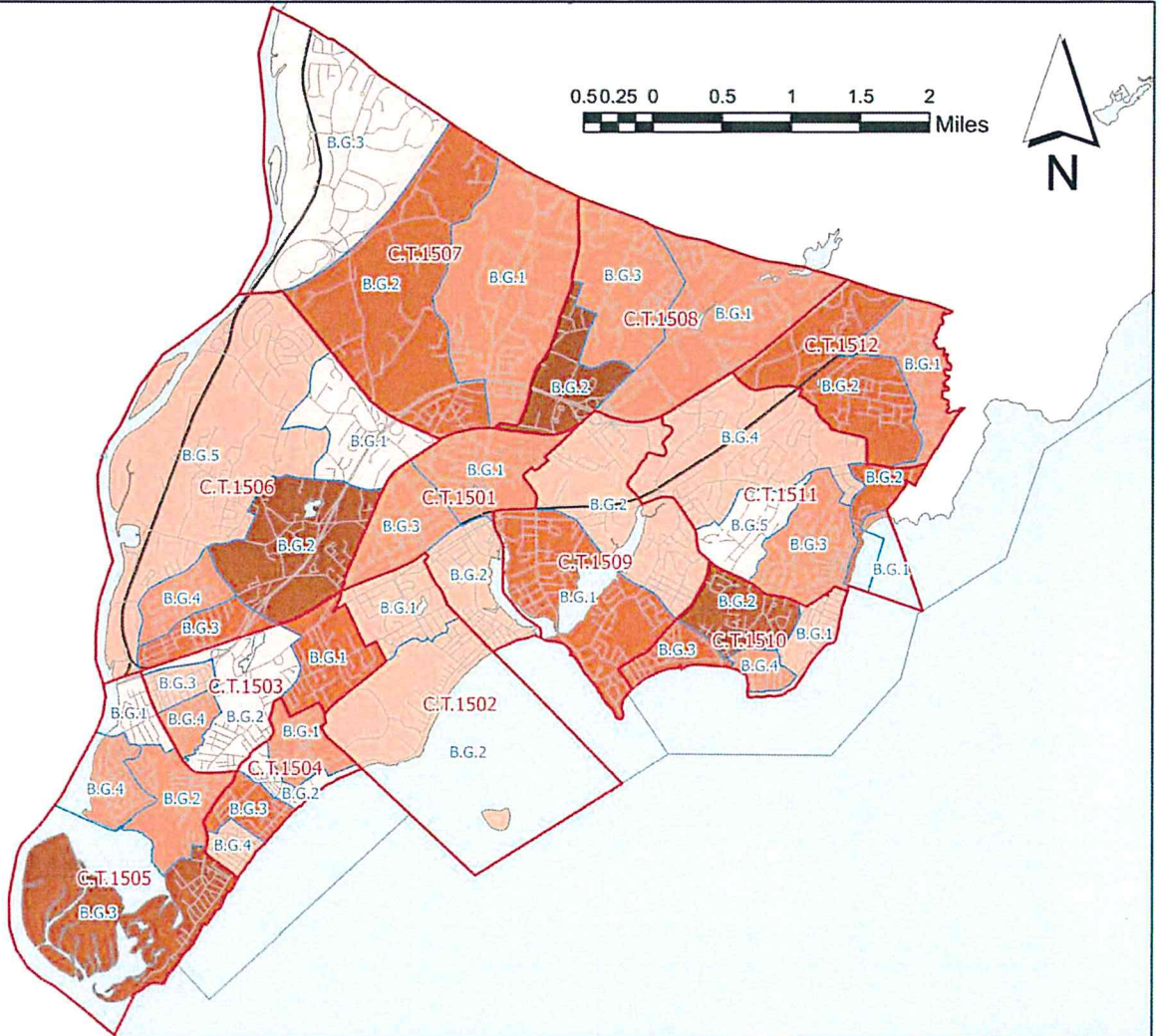
Percent Age 65+

By Block Group

- 0-10.49%
- 10.50-15.75%
- 15.76-20.84%
- 20.85-26.27%
- 26.28-49.52%

Source: 2014-2018 ACS
Five Year Estimates

0.50.25 0 0.5 1 1.5 2 Miles



**CITY OF MILFORD, CONNECTICUT
PERCENT AGED 65+ BY BLOCK GROUP**

**URBAN
DESIGN
VENTURES**

LEGEND:

- Census Tracts
- Block Groups
- Water
- Roads
- Railroads

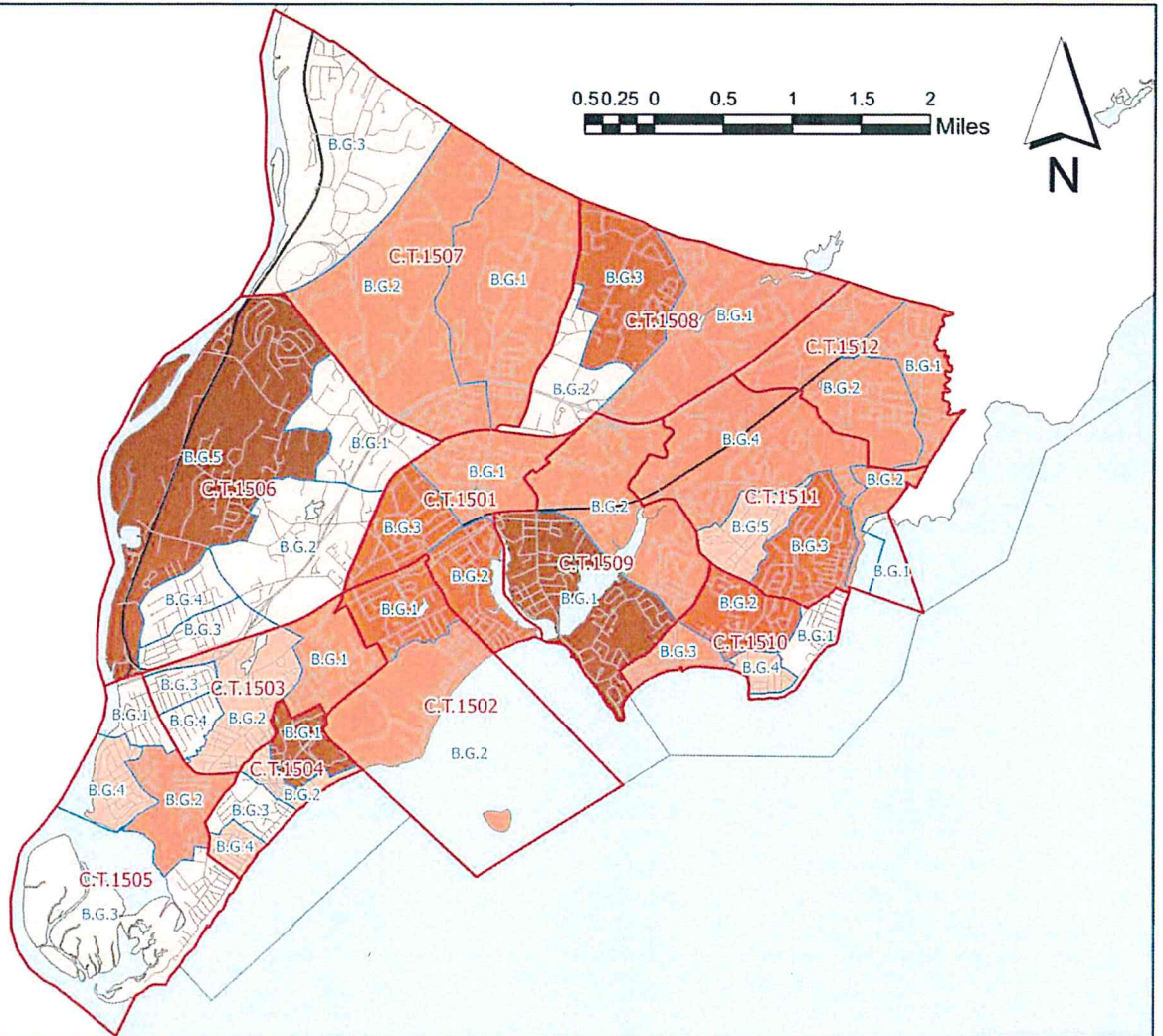
Vacant Housing

Units by Block Group

- 0-399
- 400-533
- 534-694
- 695-944
- 945-1,295

Source: 2014-2018 ACS
Five Year Estimates



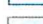


0.50.25 0 0.5 1 1.5 2 Miles



CITY OF MILFORD, CONNECTICUT NUMBER OF HOUSING UNITS BY BLOCK GROUP






**URBAN
DESIGN
VENTURES**

LEGEND:

-  Census Tracts
-  Block Groups
-  Water
-  Roads
-  Railroads

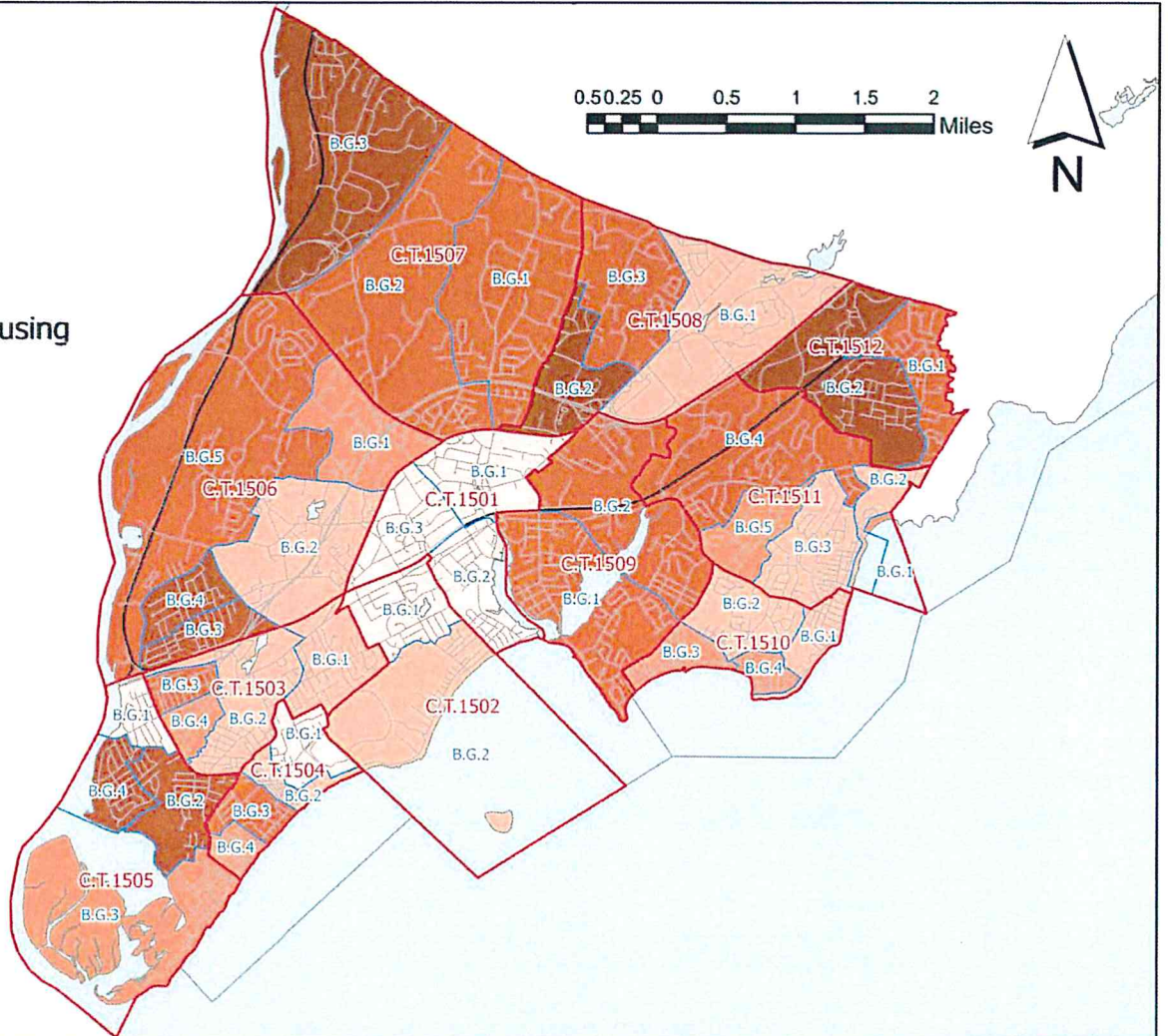
Owner-Occupied Housing

Units by Block Group

-  0-61.16%
-  61.17-75.51%
-  75.52-84.80%
-  84.81-93.26%
-  93.27-100.00%

Source: 2014-2018 ACS
Five Year Estimates

0.5 0.25 0 0.5 1 1.5 2 Miles



**CITY OF MILFORD, CONNECTICUT
PERCENT OWNER-OCCUPIED HOUSING**

**URBAN
DESIGN
VENTURES**

LEGEND:

- Census Tracts
- Block Groups
- Water
- Roads
- Railroads

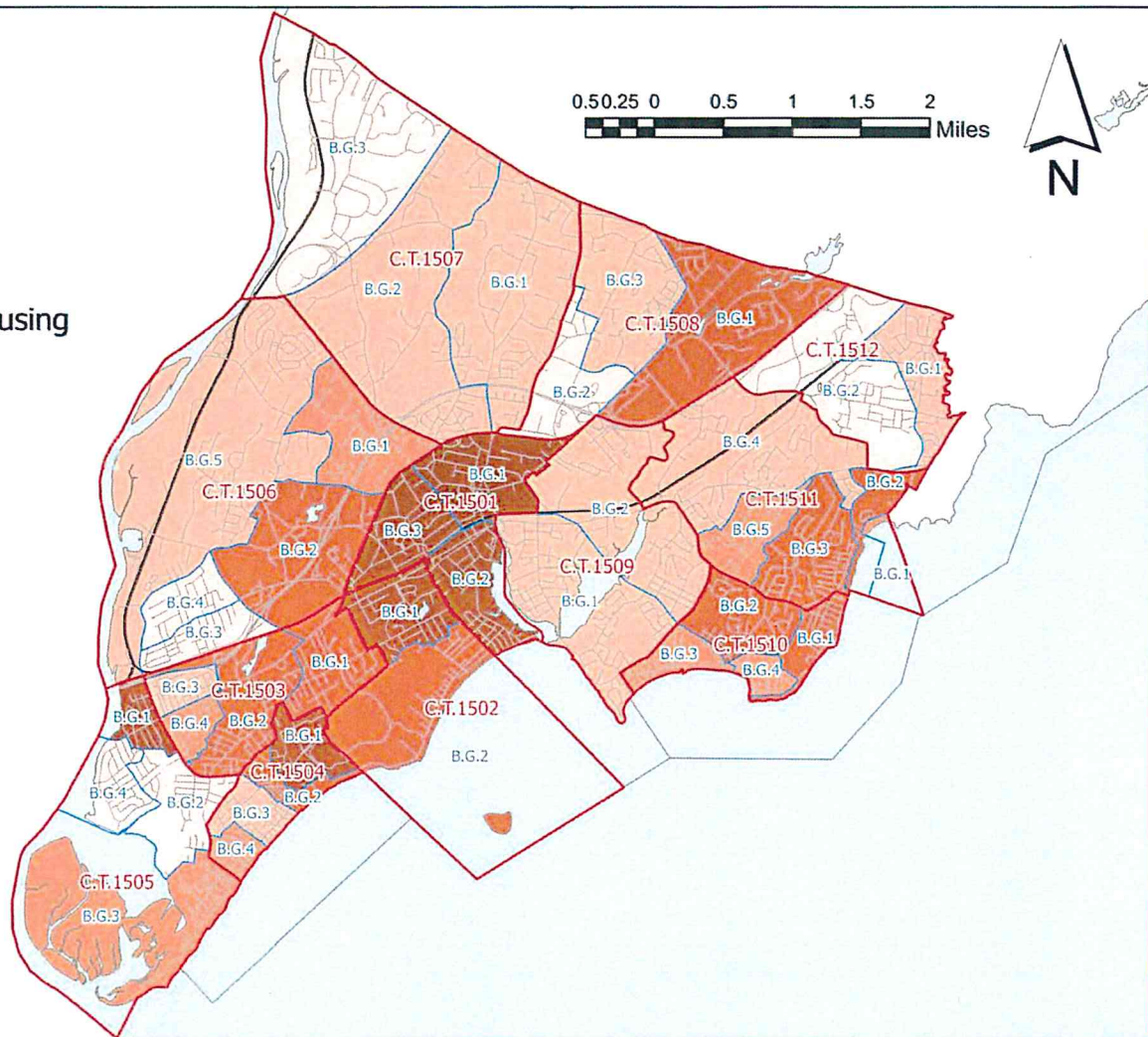
Renter-Occupied Housing

Units by Block Group

- 0-5.40%
- 5.41-12.38%
- 12.39-22.55%
- 22.56-35.41%
- 35.42-53.46%

Source: 2014-2018 ACS
Five Year Estimates






0.50.25 0 0.5 1 1.5 2 Miles



CITY OF MILFORD, CONNECTICUT PERCENT RENTER-OCCUPIED HOUSING






URBAN
DESIGN
VENTURES

LEGEND:

-  Census Tracts
-  Block Groups
-  Water
-  Roads
-  Railroads

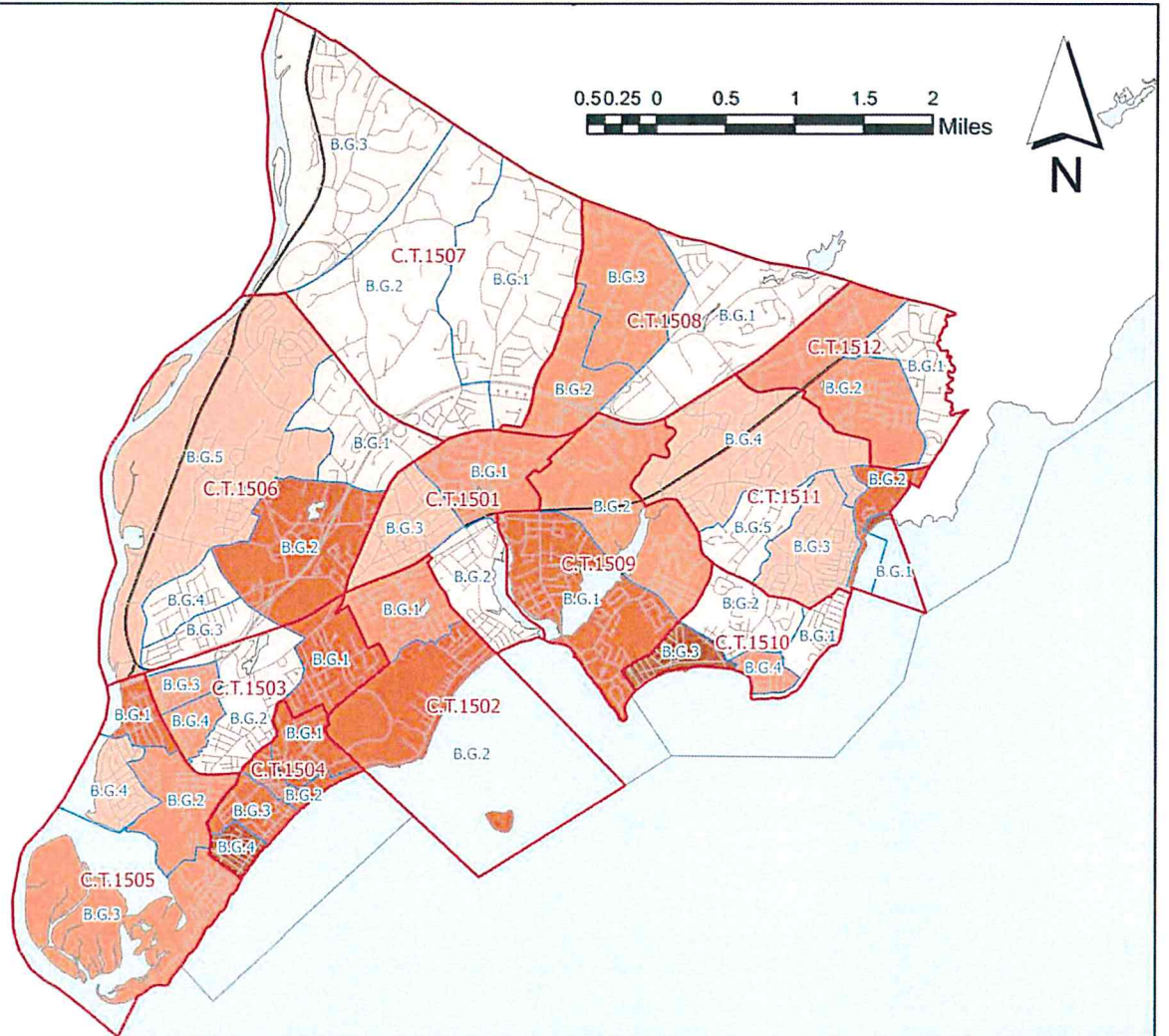
Vacant Housing

Units by Block Group

-  0-1.18%
-  1.19-6.68%
-  6.69-10.82%
-  10.83-19.84%
-  19.85-32.62%

Source: 2014-2018 ACS
Five Year Estimates

0.50.25 0 0.5 1 1.5 2 Miles



**CITY OF MILFORD, CONNECTICUT
PERCENT VACANT HOUSING UNITS**

**URBAN
DESIGN
VENTURES**

LEGEND:

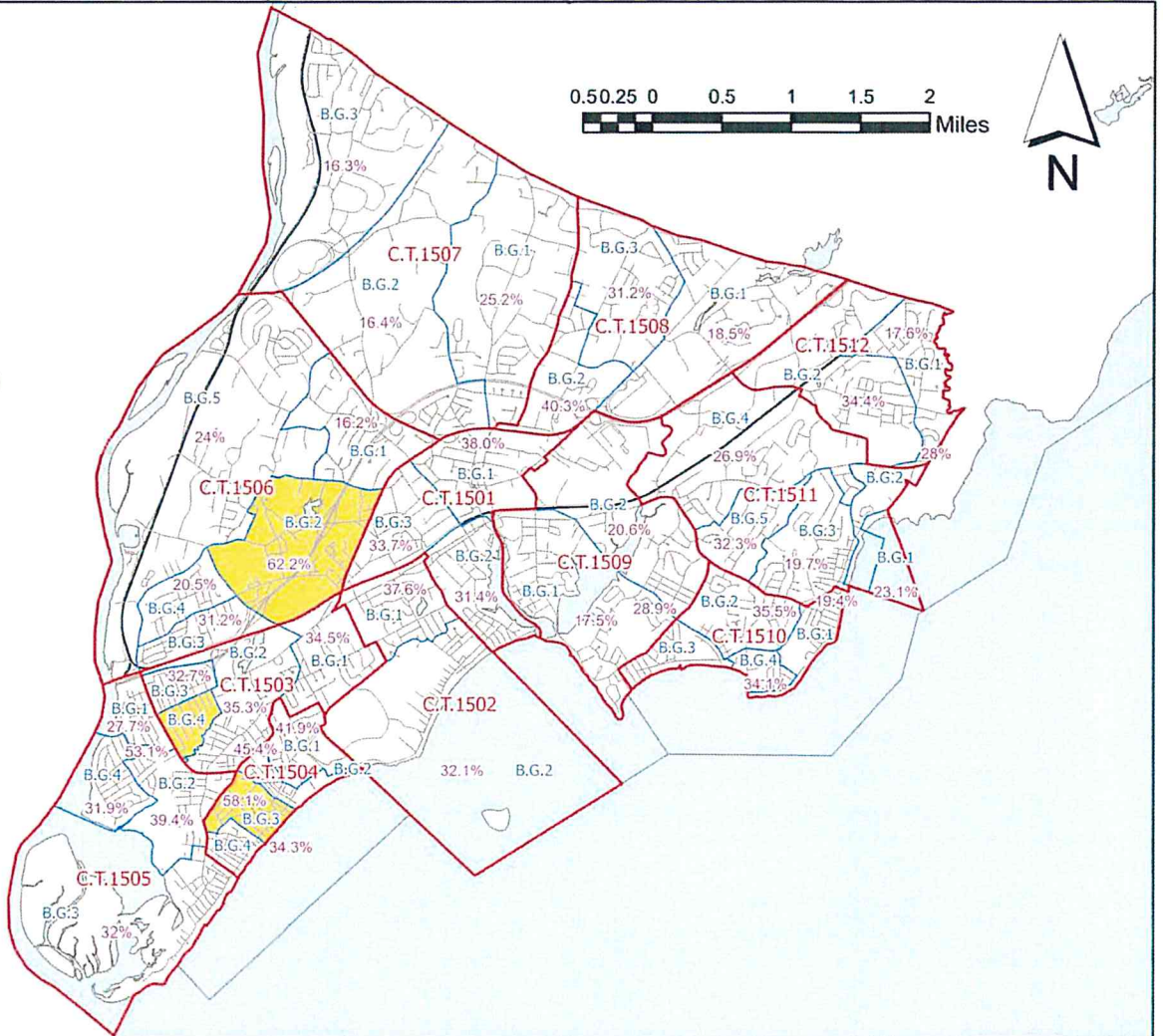
- Census Tracts
- Block Groups
- Water
- Roads
- Railroads

**Low/Mod Income
Percent by Block Group**

- Less than 51%
- 51% or More

Source: 2011-2015 ACS
Five Year Estimates

0.50.25 0 0.5 1 1.5 2 Miles



**CITY OF MILFORD, CONNECTICUT
LOW- AND MODERATE-INCOME BLOCK GROUPS**

**URBAN
DESIGN
VENTURES**

PY46 RECIPIENT & LOCATIONS

Beth El Center Inc., 90 New Haven Avenue, Milford, CT

Boys & Girls Club, 59 Devonshire Road, Milford, CT

Literacy Volunteers of Southern CT, 16 Dixon Street, Milford, CT

Milford Senior Center, 1 Jepson Drive, Milford, CT

Department of Human Services, 150 Gulf Street, Milford, CT

Rape Crisis Center, 70 W. River Street, Milford, CT

Milford ECD, Tenant Landlord Counseling, 70 W. River Street, Milford, CT

Milford ECD, Security Deposit Program, 70 W. River Street, Milford, CT

Milford Transit District, Bus Shelter, 25 Bridgeport Avenue, Milford, CT

Milford DPW/Open Space, Beaver Brook Marsh Trail & Parking, 553 West Avenue, Milford, CT

Milford DPW, Curb and Sidewalk ADA Accessible Improvements, 83 Ford Street, Milford, CT

Milford ECD, Micro-Enterprise Business Assistance, 70 W. River Street, Milford, CT

Milford ECD, Multi-Family Housing Program, 70 W. River Street, Milford, CT

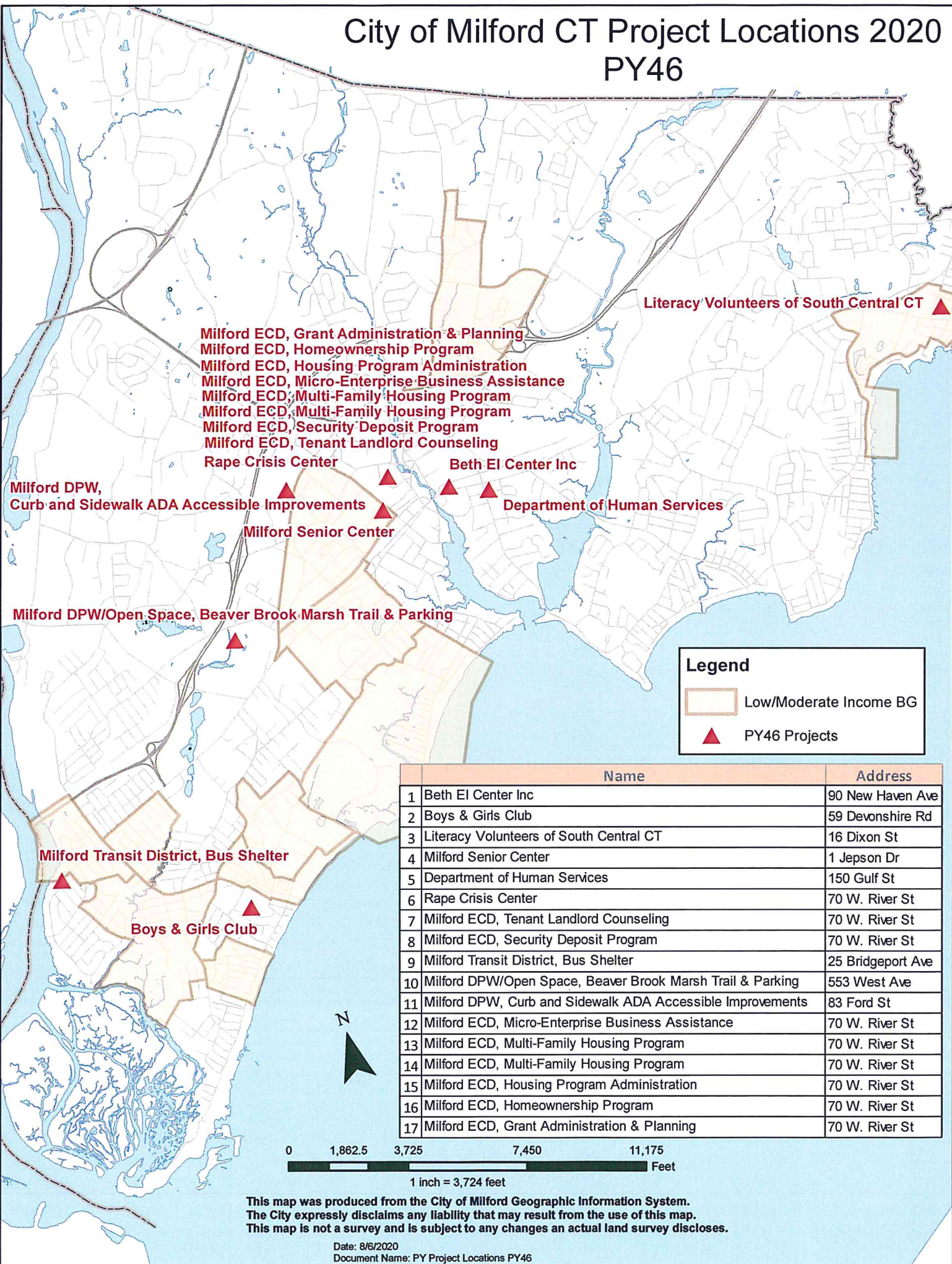
Milford ECD, Multi-Family Housing Program, 70 W. River Street, Milford, CT

Milford ECD, Housing Program Administration, 70 W. River Street, Milford, CT

Milford ECD, Homeownership Program, 70 W. River Street, Milford, CT

Milford ECD, Grant Administration & Planning, 70 W. River Street, Milford CT

City of Milford CT Project Locations 2020 PY46



City of Milford, Connecticut
American Community Survey 2011-2015 5-year estimates (2015 ACS)
Date Created: 02/25/2019

